



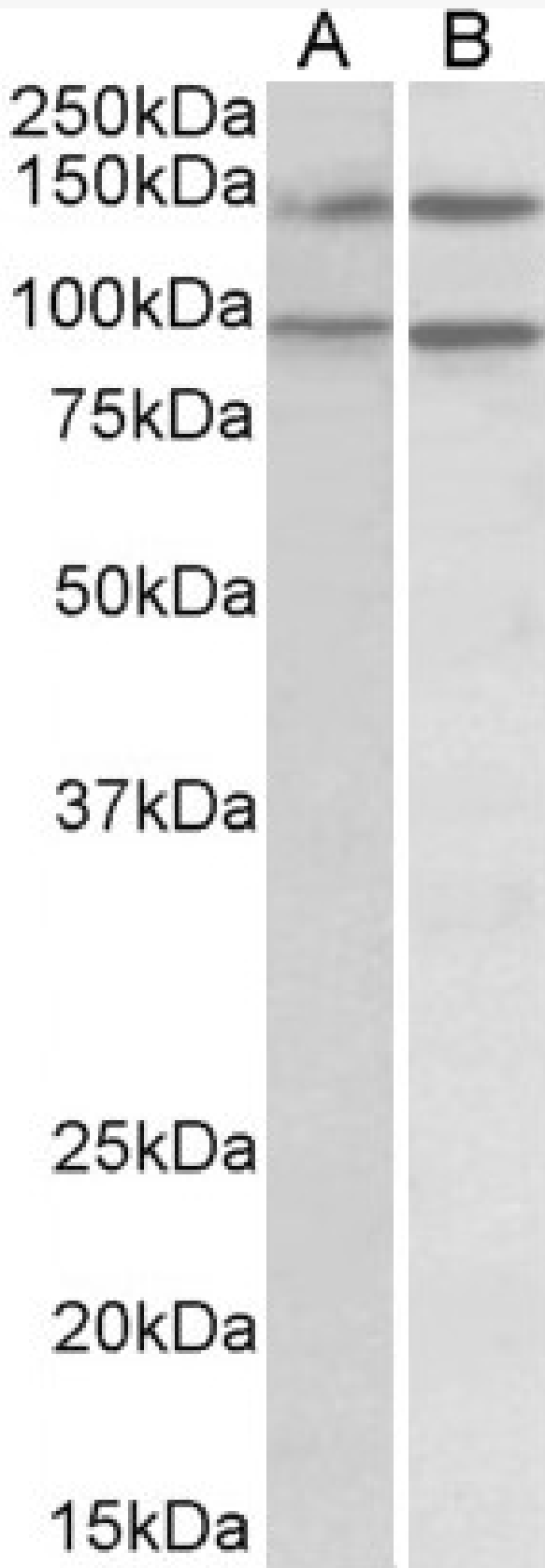
www.everestbiotech.com

Email: customerservice@vectorlabs.com

Telephone: [\(650\) 697-3600](tel:(650)697-3600)

GOAT ANTI-P114-RHO-GEF / ARHGEF18 ANTIBODY

SKU: EB06163





SPECIFICATIONS

Formulation	Supplied at 0.5 mg/ml in Tris saline, 0.02% sodium azide, pH7.3 with 0.5% bovine serum albumin.
Unit Size	100 µg
Storage Instructions	Aliquot and store at -20°C. Minimize freezing and thawing.
Synonym / Alias Names	Rho/Rac guanine nucleotide exchange factor 18 P114-RhoGEF Rho-specific guanine nucleotide exchange factor p114 MGC15913 KIAA0521 P114-RHO-GEF Rho/Rac guanine nucleotide exchange factor (GEF) 18 ARHGEF18
Usage Summary	Immunofluorescence: This antibody has been successfully used in IF on Human, PMID: 36404918.
Accession ID	NP_056133.2; NP_001124427.1
Blocking Peptide	EBP06163
Immunogen	Peptide with sequence C-SAKEDASKEDVIFF, from the C Terminus of the protein sequence according to NP_056133.2; NP_001124427.1.
Product Comments	This antibody is expected to recognize both reported isoforms (NP_056133.2; NP_001124427.1).
Peptide Sequence	C-SAKEDASKEDVIFF
Purification Method	Purified from goat serum by ammonium sulphate precipitation followed by antigen affinity chromatography using the immunizing peptide.
Shipping Instructions	Refrigerated
Predicted Species	Human
Reactive Species	Human
Human Gene ID	23370
Product Grade	https://prod-vector-labs-pimcore-assets.s3.us-east-1.amazonaws.com/assets/products/image/elite_medium.png
ELISA Detection Limit	Antibody detection limit dilution 1:128000.
Western Blot	Approx 140+90kDa band observed in lysates of cell line Daudi and Caco-2 (calculated MW of 114kDa according to NP_056133.2 and 131kDa according to NP_001124427.1). Recommended concentration: 1-3µg/ml. Primary incubation was 1 hour. This antibody has been successfully used in WB on Human, PMID: 36404918.
Application Type	Pep-ELISA, WB, IF



SELECTED REFERENCES

[{"pmid": 36404918, "intro": "**This antibody has been successfully used in WB and IF on Human:**", "title": "Downregulation of protein kinase C gamma reduces epithelial property and enhances malignant phenotypes in colorectal cancer cells.", "author": "Reiko Satow, Yudai Suzuki, Shinobu Asada, Sae Ota, Masashi Idogawa, Shiori Kubota, Noi Ikeo, Atsuko Yoneda, Kiyoko Fukami", "journal": "iScience. 2022 Nov 4;25(12):105501."}, {"pmid": 23698346, "intro": "**This antibody (previous batch) has been successfully used in WB on Medaka:**", "title": "ArhGEF18 regulates RhoA-Rock2 signaling to maintain neuro-epithelial apico-basal polarity and proliferation.", "author": "Herder C, Swiercz JM, Müller C, Peravali R, Quiring R, Offermanns S, Wittbrodt J, Loosli F.", "journal": "Development. 2013 Jul;140(13):2787-97."}, {"pmid": 23185572, "intro": "**This antibody (previous batch) has been successfully used in WB on Human:**", "title": "Stimulation of Cortical Myosin Phosphorylation by p114RhoGEF Drives Cell Migration and Tumor Cell Invasion.", "author": "Terry SJ, Elbediwy A, Zihni C, Harris AR, Bailly M, Charras GT, Balda MS, Matter K.", "journal": "PLoS One. 2012;7(11):e50188."}, {"pmid": 21258369, "intro": "**This antibody (previous batch) has been successfully used in WB, IF and IP on Human:**", "title": "Spatially restricted activation of RhoA signalling at epithelial junctions by p114RhoGEF drives junction formation and morphogenesis.", "author": "Terry SJ, Zihni C, Elbediwy A, Vitiello E, Leefa Chong San IV, Balda MS, Matter K.", "journal": "Nat Cell Biol. 2011 Feb;13(2):159-66."}]

DOCUMENTS

- [Data Sheet](#)

GALLERY IMAGES

