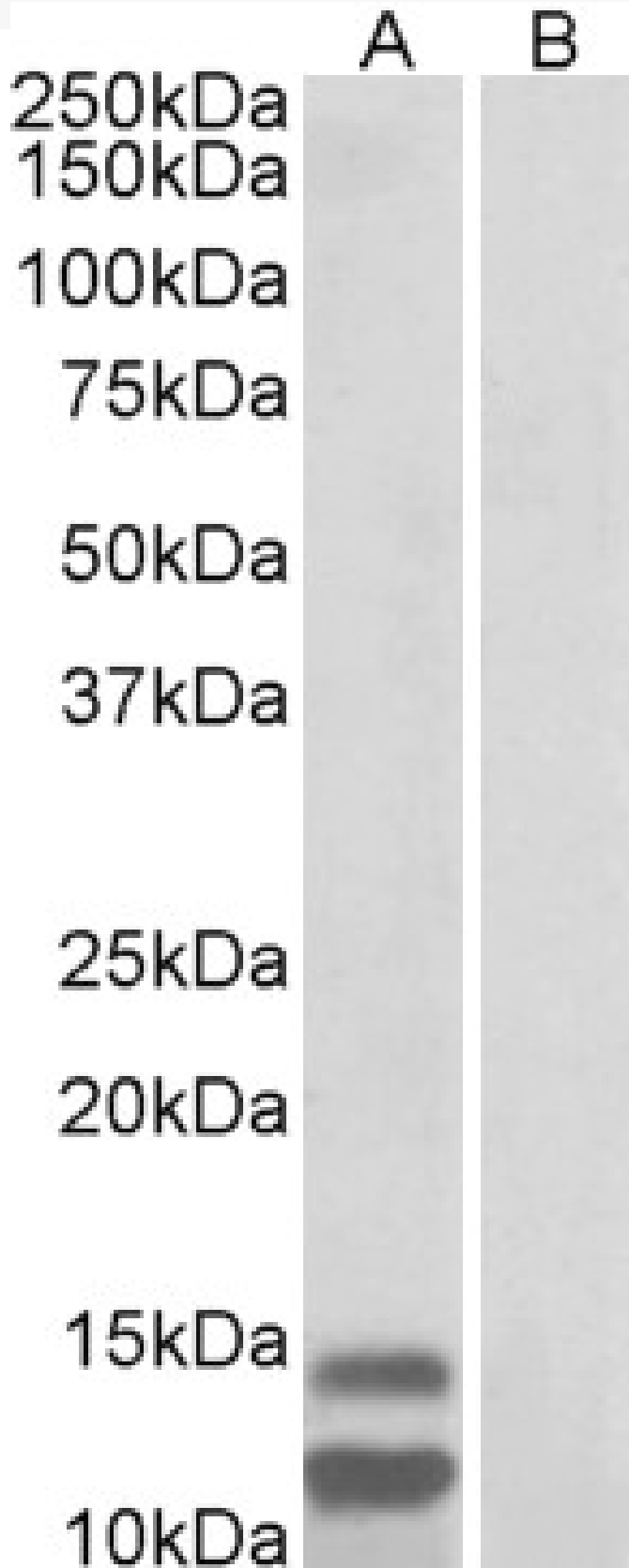


GOAT ANTI-P15INK4B (ISOFORM 2) ANTIBODY

SKU: EB11215



SPECIFICATIONS

| | |
|------------------------------|--|
| Formulation | Supplied at 0.5 mg/ml in Tris saline, 0.02% sodium azide, pH7.3 with 0.5% bovine serum albumin. |
| Unit Size | 100 µg |
| Storage Instructions | Aliquot and store at -20°C. Minimize freezing and thawing. |
| Synonym / Alias Names | CDKN2B TP15 p15-INK4b p15INK4b p15_INK4B p15 CDK inhibitor P15 p14-INK4b p14_INK4B p14_CDK inhibitor multiple tumor suppressor 2 MTS-2 MTS2 INK4B cyclin-dependent kinases 4 and 6 binding protein cyclin-dependent kinase inhibitor 2B (p15, inhibits CDK4) cyclin-dependent kinase 4 inhibitor B CDK4I CDK4B inhibitor CDK inhibitory protein |
| Accession ID | NP_004927.2; NP_511042.1 |
| Blocking Peptide | EBP11215 |
| Immunogen | Peptide with sequence C-RQGARERGARF, from the C Terminus of the protein sequence according to NP_004927.2; NP_511042.1. |
| Product Comments | This antibody is expected to recognize isoform 2 (NP_511042.1) only. |
| Peptide Sequence | C-RQGARERGARF |
| Purification Method | Purified from goat serum by ammonium sulphate precipitation followed by antigen affinity chromatography using the immunizing peptide. |
| Shipping Instructions | Refrigerated |
| Predicted Species | Human |
| Reactive Species | Human |
| Human Gene ID | 1030 |
| Product Grade | https://prod-vector-labs-pimcore-assets.s3.us-east-1.amazonaws.com/assets/products/image/elite_medium.png |
| ELISA Detection Limit | Antibody detection limit dilution 1:128000. |
| Western Blot | Approx 12+14kDa bands observed in Human Gastrointestinal cancer lysates (calculated MW of 8.1kDa according to NP_511042.1). The observed 14kDa cannot represent isoform 1 and therefore it most likely represents another posttranslational modification of isoform 2. Recommended concentration: 1-3µg/ml. |
| Application Type | Pep-ELISA, WB |

DOCUMENTS

- [Data Sheet](#)

GALLERY IMAGES

