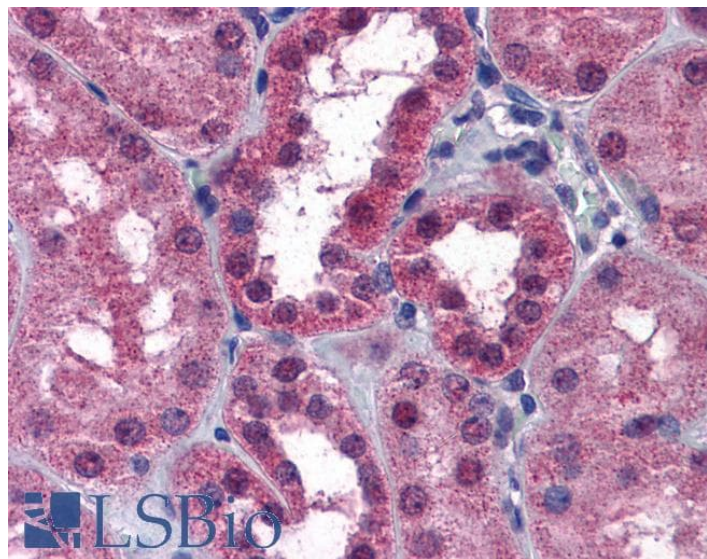


# GOAT ANTI-P2RX7 / P2X7 RECEPTOR ANTIBODY

**SKU:** EB09509



## SPECIFICATIONS

<b>Formulation</b>	Supplied at 0.5 mg/ml in Tris saline, 0.02% sodium azide, pH7.3 with 0.5% bovine serum albumin.
<b>Unit Size</b>	100 µg
<b>Storage Instructions</b>	Aliquot and store at -20°C. Minimize freezing and thawing.
<b>Synonym / Alias Names</b>	purinergic receptor P2X7 P2Z receptor P2X7 receptor P2X purinoceptor 7 ATP receptor P2X7 MGC20089 purinergic receptor P2X, ligand-gated ion channel, 7 P2RX7
<b>Usage Summary</b>	<p><b>Immunofluorescence:</b> Strong expression of the protein seen in the cytoplasm and plasma membranes of HeLa cells. Recommended concentration: 10µg/ml. This antibody has been successfully used in IF on Mouse: Thaler R et al. (2015) PMID: 25491310.</p> <p><b>Flow Cytometry:</b> Flow cytometric analysis of HeLa cells. Recommended concentration: 10ug/ml.</p>
<b>Accession ID</b>	NP_002553.3
<b>Blocking Peptide</b>	EBP09509
<b>Immunogen</b>	Peptide with sequence YETNKVTRIQSMNY-C, from the N Terminus of the protein sequence according to NP_002553.3.
<b>Peptide Sequence</b>	YETNKVTRIQSMNY-C

<b>Purification Method</b>	Purified from goat serum by ammonium sulphate precipitation followed by antigen affinity chromatography using the immunizing peptide.
<b>Shipping Instructions</b>	Refrigerated
<b>Predicted Species</b>	Human, Mouse, Rat, Dog
<b>Reactive Species</b>	Human, Mouse
<b>Human Gene ID</b>	5027
<b>Mouse Gene ID</b>	18439
<b>Rat Gene ID</b>	29665
<b>Product Grade</b>	<a href="https://prod-vector-labs-pimcore-assets.s3.us-east-1.amazonaws.com/assets/products/image/elite_plus_medium.png">https://prod-vector-labs-pimcore-assets.s3.us-east-1.amazonaws.com/assets/products/image/elite_plus_medium.png</a> In paraffin embedded Human Brain Cortex shows membranous staining of cell bodies and processes.
<b>IHC Results</b>	Recommended concentration: 3-6µg/ml. Paraffin embedded Human Kidney. Recommended concentration: 3.75µg/ml.
<b>ELISA Detection Limit</b>	Antibody detection limit dilution 1:16000.
<b>Western Blot</b>	Approx 37kDa and 70kDa band observed in Human Brain (Frontal Cortex) lysates (calculated MW of 68.6kDa according to NP_002553.2). Recommended concentration: 1-3µg/ml. Primary incubation was an 1 hour. An additional band of unknown identity was also consistently observed at 37kDa. This band was successfully blocked by incubation with the immunizing peptide.
<b>Application Type</b>	Pep-ELISA, WB, IHC, IF, FC

## SELECTED REFERENCES

[{"pmid": 25491310, "intro": "**This antibody has been successfully used in IF on Mouse:**", "title": "Acute-phase protein serum amyloid A3 is a novel paracrine coupling factor that controls bone homeostasis.", "author": "Thaler R, Sturmlechner I, Spitzer S, Riester SM, Rumpler M, Zwerina J, Klaushofer K, van Wijnen AJ, Varga F.", "journal": "FASEB J. 2015 Apr;29(4):1344-59."}]

## DOCUMENTS

- [Data Sheet](#)

## GALLERY IMAGES

