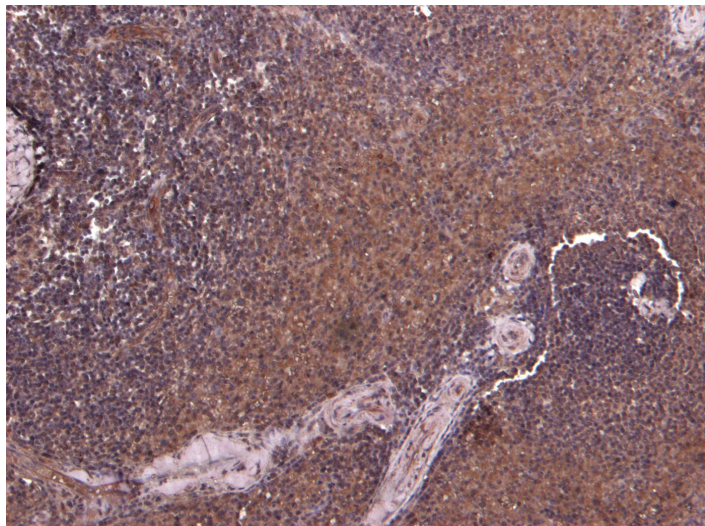


# GOAT ANTI-P4HA1 ANTIBODY

**SKU:** EB07666



## SPECIFICATIONS

**Formulation** Supplied at 0.5 mg/ml in Tris saline, 0.02% sodium azide, pH7.3 with 0.5% bovine serum albumin.

**Unit Size** 100 µg

**Storage Instructions** Aliquot and store at -20°C. Minimize freezing and thawing.

**Synonym / Alias Names** prolyl 4-hydroxylase, alpha I subunit|P4HA|4-PH alpha-1|procollagen-proline, 2-oxoglutarate 4-dioxygenase (proline 4-hydroxylase), alpha polypeptide I|P4HA1

**Usage Summary** <strong>Immunofluorescence:</strong> Strong expression of the protein seen in the ER and cytoplasm of A431 cells. Recommended concentration: 10µg/ml.

**Accession ID** NP\_000908.2; NP\_001017962.1

**Blocking Peptide** EBP07666

**Immunogen** Peptide with sequence C-DFARKDEPDAFKE, from the internal region of the protein sequence according to NP\_000908.2; NP\_001017962.1.

**Product Comments** This antibody is expected to recognise both reported isoforms (NP\_000908.2 and NP\_001017962.1).

**Peptide Sequence** C-DFARKDEPDAFKE

<b>Purification Method</b>	Purified from goat serum by ammonium sulphate precipitation followed by antigen affinity chromatography using the immunizing peptide.
<b>Shipping Instructions</b>	Refrigerated
<b>Predicted Species</b>	Human, Dog, Cow
<b>Reactive Species</b>	Human
<b>Human Gene ID</b>	5033
<b>Mouse Gene ID</b>	18451
<b>Rat Gene ID</b>	64475
<b>Product Grade</b>	<a href="https://prod-vector-labs-pimcore-assets.s3.us-east-1.amazonaws.com/assets/products/image/elite_medium.png">https://prod-vector-labs-pimcore-assets.s3.us-east-1.amazonaws.com/assets/products/image/elite_medium.png</a>
<b>IHC Results</b>	Paraffin embedded Human Spleen. Recommended concentration: 7µg/ml.
<b>ELISA</b>	
<b>Detection Limit</b>	Antibody detection limit dilution 1:128000.
<b>Application Type</b>	Pep-ELISA, IF, IHC

## DOCUMENTS

- [Data Sheet](#)

## GALLERY IMAGES

