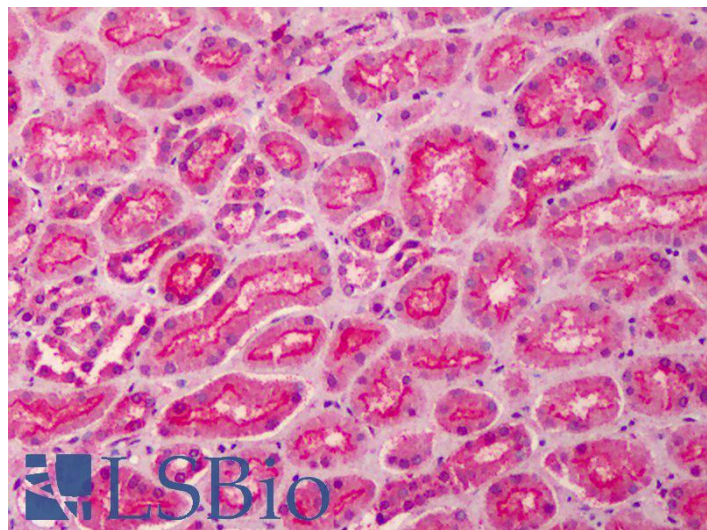


GOAT ANTI-PALS / MPP5 ANTIBODY

SKU: EB06223



SPECIFICATIONS

Formulation	Supplied at 0.5 mg/ml in Tris saline, 0.02% sodium azide, pH7.3 with 0.5% bovine serum albumin.
Unit Size	100 µg
Storage Instructions	Aliquot and store at -20°C. Minimize freezing and thawing.
Synonym / Alias Names	stardust membrane protein, palmitoylated 5 MAGUK p55 subfamily member 5 stardust (Drosophila) membrane protein, palmitoylated 5 (MAGUK p55 subfamily member 5) FLJ12615 PALS1 MPP5
Usage Summary	Immunofluorescence: Strong expression of the protein seen in U2OS and HeLa cells. Recommended concentration: 10µg/ml. Flow Cytometry: Flow cytometric analysis of HeLa cells. Recommended concentration: 10ug/ml.
Accession ID	NP_071919.2; NP_001243479.1
Blocking Peptide	EBP06223
Immunogen	Peptide with sequence NKASPPFPLISNAQ-C, from the N Terminus of the protein sequence according to NP_071919.2; NP_001243479.1.
Peptide Sequence	NKASPPFPLISNAQ-C
Purification Method	Purified from goat serum by ammonium sulphate precipitation followed by antigen affinity chromatography using the immunizing peptide.

Shipping Instructions	Refrigerated
Predicted Species	Human, Cow, Dog, Pig
Reactive Species	Human
Human Gene ID	64398
Product Grade	https://prod-vector-labs-pimcore-assets.s3.us-east-1.amazonaws.com/assets/products/image/elite_plus_medium.png
IHC Results	Paraffin embedded Human Small Intestine and Kidney. Recommended concentration: 5µg/ml.
ELISA	
Detection Limit	Antibody detection limit dilution 1:32000.
Western Blot	Preliminary testing showed a band at approx 75kDa in Human Cerebellum lysate after 1µg/ml antibody staining (calculated MW of 73.4kDa according to NP_001243479.1). Primary incubation 1 hour at room temperature.
Application Type	Pep-ELISA, IF, IHC, FC

DOCUMENTS

- [Data Sheet](#)

GALLERY IMAGES

