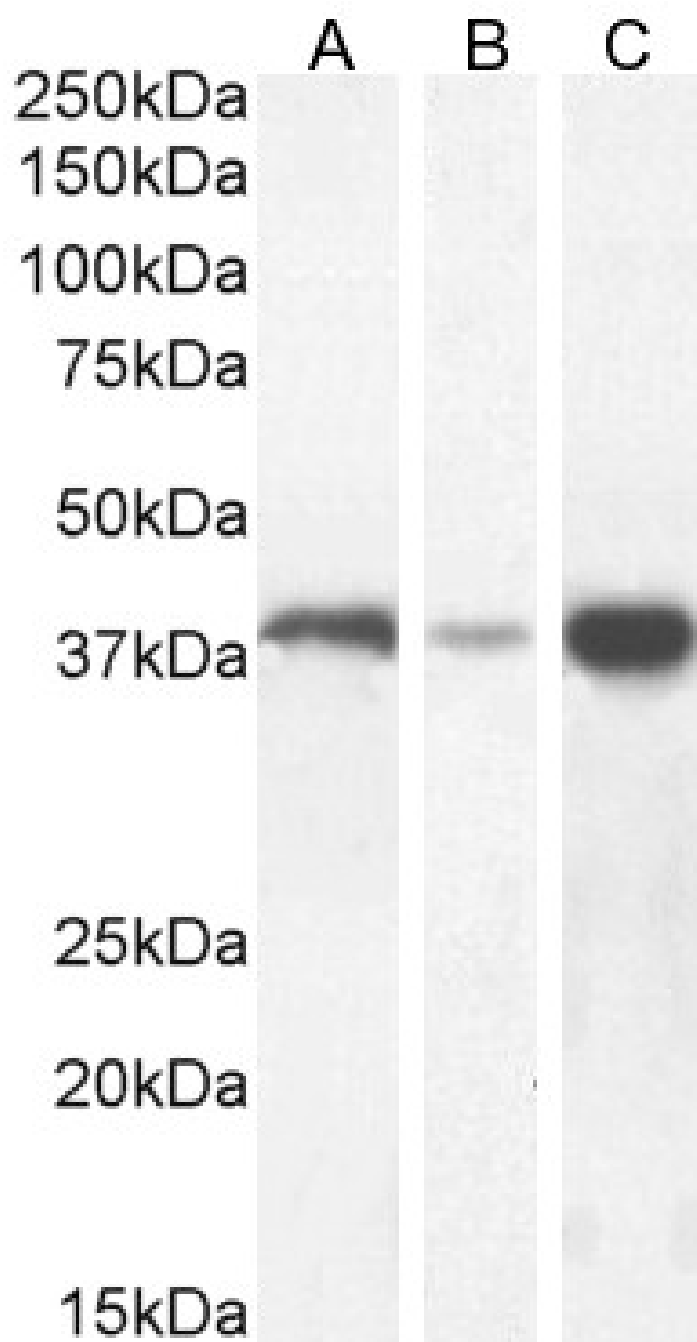


GOAT ANTI-PAN ADH (N TERMINUS) ANTIBODY

SKU: EB13107



SPECIFICATIONS

Formulation	Supplied at 0.5 mg/ml in Tris saline, 0.02% sodium azide, pH7.3 with 0.5% bovine serum albumin.
Unit Size	100 µg
Storage	Aliquot and store at -20°C. Minimize freezing and thawing.
Instructions	
Synonym / Alias	alcohol dehydrogenase 1B (class I), beta polypeptide alcohol dehydrogenase 2 (class I), beta polypeptide alcohol dehydrogenase 2 aldehyde reductase ADH, beta subunit alcohol dehydrogenase 1B (class I), beta polypeptide ADH2 ADH1B pan ADH
Accession ID	NP_000659.2; NP_000658.1; NP_000660.1
Blocking Peptide	EBP13107
Immunogen	Peptide with sequence STAGKVIKCKAC, from the N Terminus of the protein sequence according to NP_000659.2; NP_000658.1; NP_000660.1.
Product Comments	This is an alternative product to EB06599. This antibody is expected to recognise the alpha (ADH1A, NP_000658.1), the beta (ADH1B, NP_000659.2) and gamma (ADH1C, NP_000660.1) polypeptide variants of human alcohol dehydrogenase.
Peptide Sequence	STAGKVIKCKAC
Purification Method	Purified from goat serum by ammonium sulphate precipitation followed by antigen affinity chromatography using the immunizing peptide.
Shipping Instructions	Refrigerated
Predicted Species	Human, Mouse, Rat
Reactive Species	Human, Rat
Human Gene ID	124, 125
Product Grade	https://prod-vector-labs-pimcore-assets.s3.us-east-1.amazonaws.com/assets/products/image/elite_medium.png
ELISA Detection Limit	Antibody detection limit dilution 1:4000.
Western Blot	Approx 38kDa band observed in Human Liver, Duodenum and Breast lysates and approx. 37kDa in Rat Liver lysates (calculated MW of 39.9kDa according to Human NP_000659.2 and 39.6kDa Rat NP_062159.3). Recommended concentration: 0.3-1µg/ml. Primary incubation 1 hour at room temperature.
Application Type	Pep-ELISA, WB

GALLERY IMAGES

