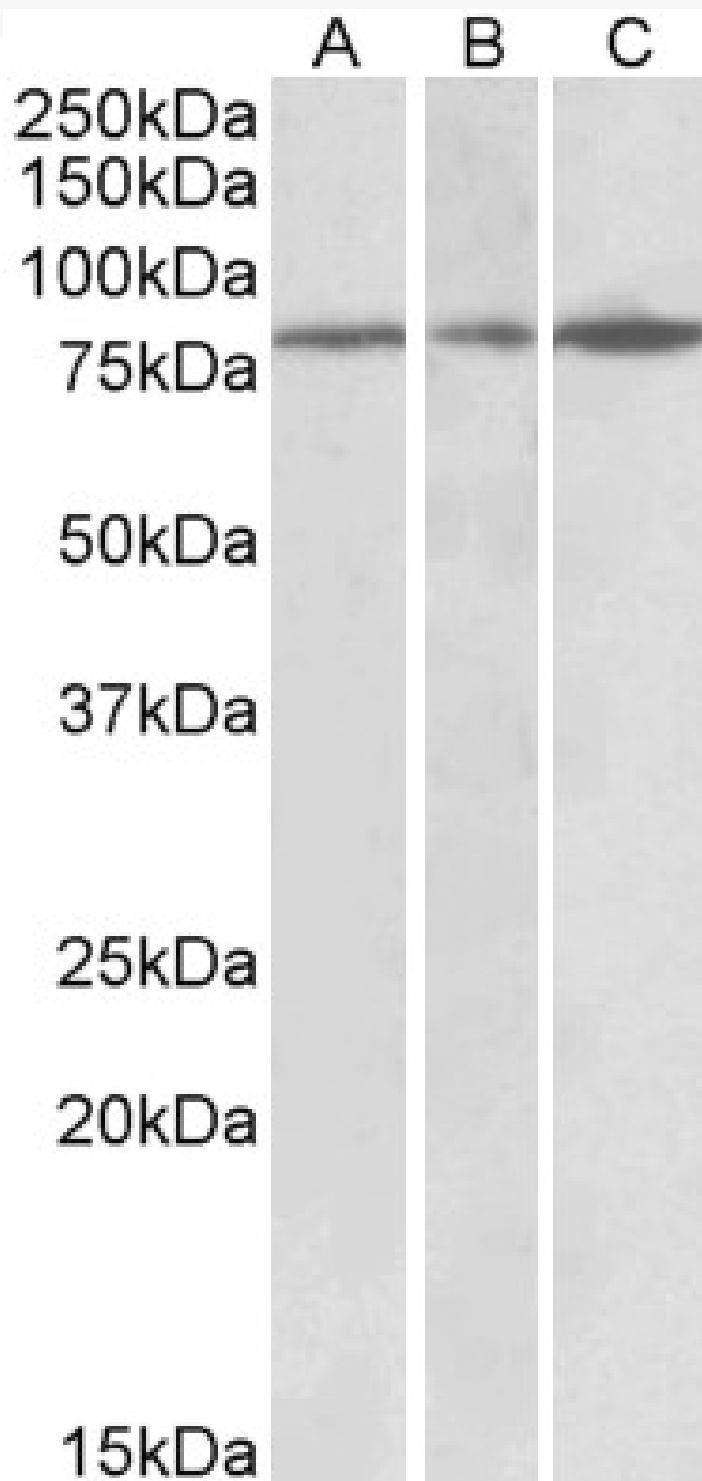


# GOAT ANTI-PAPD5 (AA78-90) ANTIBODY

**SKU:** EB10875



## SPECIFICATIONS

<b>Formulation</b>	Supplied at 0.5 mg/ml in Tris saline, 0.02% sodium azide, pH7.3 with 0.5% bovine serum albumin.
<b>Unit Size</b>	100 µg
<b>Storage Instructions</b>	Aliquot and store at -20°C. Minimize freezing and thawing.
<b>Synonym / Alias Names</b>	topoisomerase-related function protein 4-2  terminal uridylyltransferase 3  TUTase 3  PAP-associated domain-containing protein 5  TRF4-2  FLJ40270  PAP associated domain containing 5 PAPD5
<b>Accession ID</b>	NP_001035374.2; NP_001035375.2
<b>Blocking Peptide</b>	EBP10875
<b>Immunogen</b>	Peptide with sequence C-HALPAEQRDFLP, from the internal region of the protein sequence according to NP_001035374.2; NP_001035375.2.
<b>Product Comments</b>	This antibody is expected to recognize both reported isoforms (NP_001035374.2; NP_001035375.2).
<b>Peptide Sequence</b>	C-HALPAEQRDFLP
<b>Purification Method</b>	Purified from goat serum by ammonium sulphate precipitation followed by antigen affinity chromatography using the immunizing peptide.
<b>Shipping Instructions</b>	Refrigerated
<b>Predicted Species</b>	Human, Mouse
<b>Reactive Species</b>	Human, Mouse
<b>Human Gene ID</b>	64282
<b>Mouse Gene ID</b>	214627
<b>Product Grade</b>	<a href="https://prod-vector-labs-pimcore-assets.s3.us-east-1.amazonaws.com/assets/products/image/elite_medium.png">https://prod-vector-labs-pimcore-assets.s3.us-east-1.amazonaws.com/assets/products/image/elite_medium.png</a>
<b>ELISA Detection Limit</b>	Antibody detection limit dilution 1:64000.
<b>Western Blot</b>	Approx 75-80kDa band observed in Human and Mouse Brain lysates (calculated MW of 75.8kDa according to Human NP_001035374.2 and 74.2kDa according to Mouse NP_001157969.1). Recommended concentration: 0.3-1µg/ml. Primary incubation was 1 hour.
<b>Application Type</b>	Pep-ELISA, WB

## DOCUMENTS

- [Data Sheet](#)

## GALLERY IMAGES

