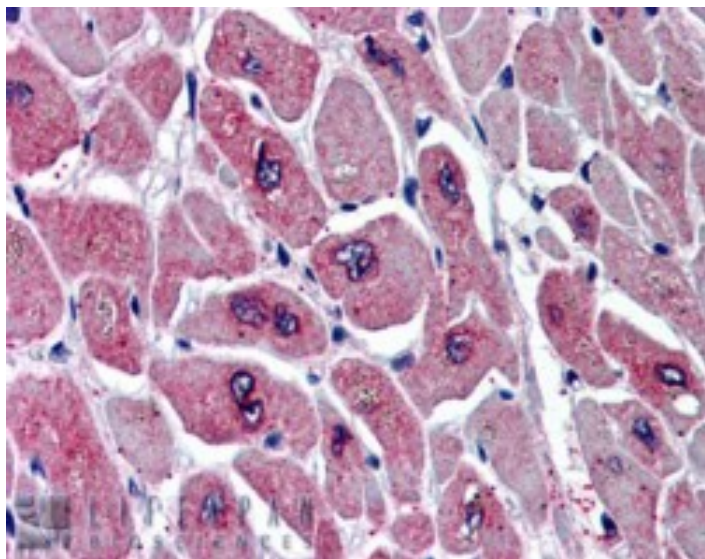


# GOAT ANTI-PAR6ALPHA / PARD6A ANTIBODY

**SKU:** EB06228



## SPECIFICATIONS

<b>Formulation</b>	Supplied at 0.5 mg/ml in Tris saline, 0.02% sodium azide, pH7.3 with 0.5% bovine serum albumin.
<b>Unit Size</b>	100 µg
<b>Storage Instructions</b>	Aliquot and store at -20°C. Minimize freezing and thawing.
<b>Synonym / Alias Names</b>	partitioning-defective protein 6 partitioning defective-6 homolog alpha par-6 partitioning defective 6 homolog alpha Tax-interacting protein 40 PAR6C PAR6 par-6 (partitioning defective 6, C.elegans) homolog alpha Tax interaction protein 40 par-6 partitioning defective 6 homolog alpha (C.elegans) TIP-40 PAR-6A TAX40 PAR-6 PAR6alpha PARD6A
<b>Usage Summary</b>	<strong>Flow Cytometry:</strong> Flow cytometric analysis of Jurkat cells. Recommended concentration: 10ug/ml.
<b>Accession ID</b>	NP_058644.1; NP_001032358.1
<b>Blocking Peptide</b>	EBP06228
<b>Immunogen</b>	Peptide with sequence C-GSRIRGDGSGFSL, from the C Terminus of the protein sequence according to NP_058644.1; NP_001032358.1.
<b>Product Comments</b>	This antibody is expected to recognise both reported isoforms (NP_058644.1; NP_001032358.1).
<b>Peptide Sequence</b>	C-GSRIRGDGSGFSL

<b>Purification Method</b>	Purified from goat serum by ammonium sulphate precipitation followed by antigen affinity chromatography using the immunizing peptide.
<b>Shipping Instructions</b>	Refrigerated
<b>Predicted Species</b>	Human
<b>Reactive Species</b>	Human
<b>Human Gene ID</b>	50855
<b>Product Grade</b>	<a href="https://prod-vector-labs-pimcore-assets.s3.us-east-1.amazonaws.com/assets/products/image/elite_plus_medium.png">https://prod-vector-labs-pimcore-assets.s3.us-east-1.amazonaws.com/assets/products/image/elite_plus_medium.png</a>
<b>IHC Results</b>	In paraffin embedded Human Pancreas, shows strong cytoplasmic staining in rare cells of intralobular ducts. Recommended concentration: 10µg/ml. Also tested in paraffin embedded Human Heart where it shows speckled staining on myocardial fibres in transverse section. Recommended concentration: 5-10µg/ml.
<b>ELISA Detection Limit</b>	Antibody detection limit dilution 1:8000.
<b>Western Blot</b>	Approx 40kDa band observed in lysates of cell lines Jurkat and glioblastoma U251 (calculated MW of 37.4kDa according to NP_058644.1) . Recommended concentration: 1-3µg/ml. Primary incubation 1 hour at room temperature.
<b>Application Type</b>	Pep-ELISA, WB, IHC, FC

## DOCUMENTS

- [Data Sheet](#)

## GALLERY IMAGES

