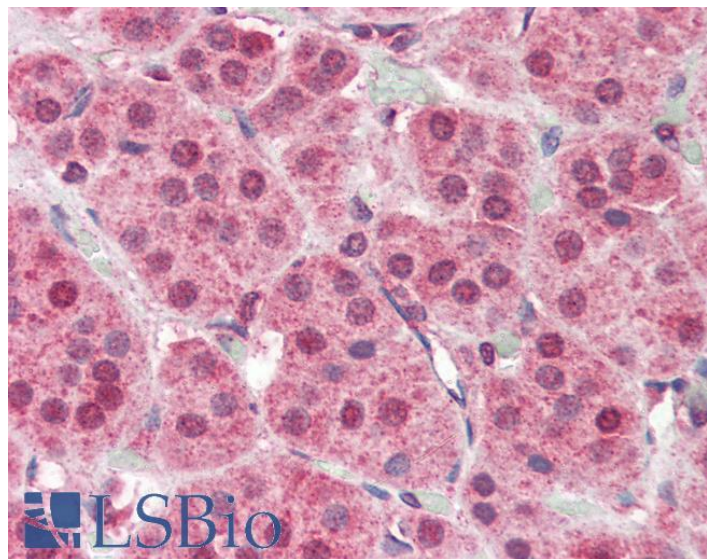


GOAT ANTI-PARP2 ANTIBODY

SKU: EB07098



SPECIFICATIONS

Formulation	Supplied at 0.5 mg/ml in Tris saline, 0.02% sodium azide, pH7.3 with 0.5% bovine serum albumin.
Unit Size	100 µg
Storage	Aliquot and store at -20°C. Minimize freezing and thawing.
Instructions	
Synonym / Alias	poly(ADP-ribose) synthetase poly (ADP-ribosyl) transferase-like 2 ADP-ribosyltransferase (NAD poly ADP-ribose polymerase)-like 2 pADPRT-2 PARP-2 ADPRTL3 ADPRTL2 ADPRT2 HGNC:272 poly (ADP-ribose) polymerase
Names	family, member 2 PARP2
Accession ID	NP_005475.1
Blocking Peptide	EBP07098
Immunogen	Peptide with sequence C-LDLFEVEKDGEKE, from the internal region of the protein sequence according to NP_005475.1.
Peptide Sequence	C-LDLFEVEKDGEKE
Purification Method	Purified from goat serum by ammonium sulphate precipitation followed by antigen affinity chromatography using the immunizing peptide.
Shipping Instructions	Refrigerated

Predicted Species	Human
Reactive Species	Human
Human Gene ID	10038
Product Grade	https://prod-vector-labs-pimcore-assets.s3.us-east-1.amazonaws.com/assets/products/image/elite_medium.png
IHC Results	Paraffin embedded Human Skin and Adrenal Gland. Recommended concentration: 5µg/ml.
ELISA	
Detection Limit	Antibody detection limit dilution 1:8000.
Western Blot	Approx 70kDa band observed in Human Spleen lysates (calculated MW of 60.8kDa according to NP_005475.1. Recommended concentration: 1-3µg/ml.
Application Type	Pep-ELISA, WB, IHC

DOCUMENTS

- [Data Sheet](#)

GALLERY IMAGES

