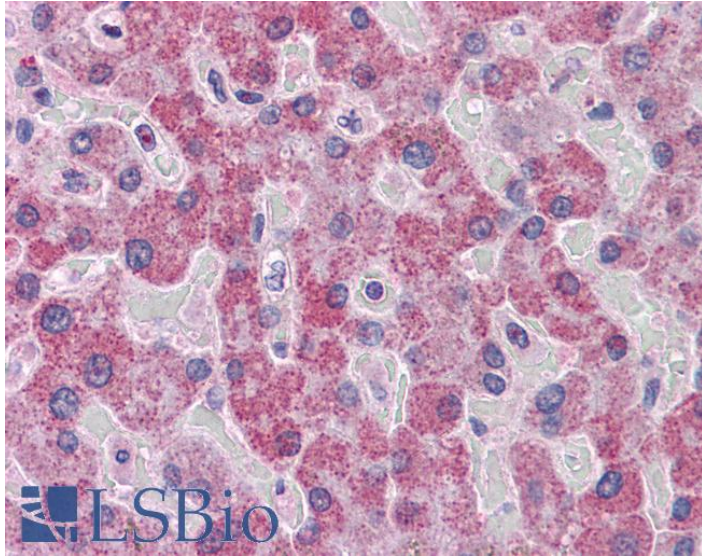




GOAT ANTI-PARP3 ANTIBODY

SKU: EB09029



SPECIFICATIONS

Formulation Supplied at 0.5 mg/ml in Tris saline, 0.02% sodium azide, pH7.3 with 0.5% bovine serum albumin.

Unit Size 100 µg

Storage Instructions Aliquot and store at -20°C. Minimize freezing and thawing.

Synonym / Alias Names PARP3|poly (ADP-ribose) polymerase family, member 3|ADPRT3|ADPRTL2|ADPRTL3|IRT1|hPARP-3|pADPRT-3|ADP-ribosyltransferase (NAD+|poly (ADP-ribose) polymerase)-like 2|ADP-ribosyltransferase (NAD+|poly (ADP-ribose) polymerase)-like 3|NAD+ ADP-ribosyltransferase 3|poly(ADP-ribose) polymerase 3|poly(ADP-ribose) synthetase-3

Accession ID NP_001003931.2; NP_001003935.2

Blocking Peptide EBP09029

Immunogen Peptide with sequence YEDYNCTLNQTNIEN , from the internal region of the protein sequence according to NP_001003931.2; NP_001003935.2.

Product Comments This antibody is expected to recognize both reported isoforms (NP_001003931.2; NP_001003935.2).

Peptide Sequence YEDYNCTLNQTNIEN



Purification Method	Purified from goat serum by ammonium sulphate precipitation followed by antigen affinity chromatography using the immunizing peptide.
Shipping Instructions	Refrigerated
Predicted Species	Human
Reactive Species	Human
Human Gene ID	10039
Product Grade	https://prod-vector-labs-pimcore-assets.s3.us-east-1.amazonaws.com/assets/products/image/elite_medium.png
IHC Results	Paraffin embedded Human Liver and Kidney. Recommended concentration: 3.75µg/ml.
ELISA Detection Limit	Antibody detection limit dilution 1:2000.
Western Blot	Preliminary experiments in lysates of cell lines Daudi, HeLa and HepG2 gave no specific signal but low background (at antibody concentration up to 1µg/ml).
Application Type	Pep-ELISA, IHC

DOCUMENTS

- [Data Sheet](#)

GALLERY IMAGES

