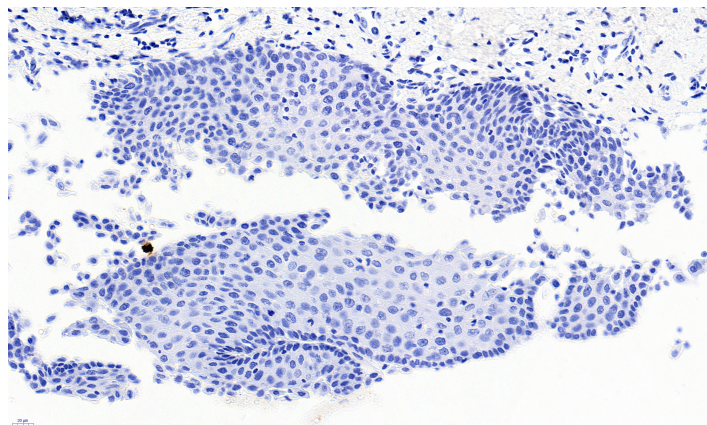


GOAT ANTI-PAX3 ANTIBODY

SKU: EB06343



SPECIFICATIONS

Formulation Supplied at 0.5 mg/ml in Tris saline, 0.02% sodium azide, pH7.3 with 0.5% bovine serum albumin.

Unit Size 100 µg

Storage Instructions Aliquot and store at -20°C. Minimize freezing and thawing.

Synonym / Alias Names paired domain gene HuP2|paired box homeotic gene 3|MGC134778|MGC120384|MGC120383|MGC120382|MGC120381|paired box 3|paired box homeotic gene 3 (Waardenburg syndrome 1)|paired domain gene 3|paired box gene 3 (Waardenburg syndrome 1)|HUP2|CDHS|WS1|PAX3

Accession ID NP_852122.1; NP_000429.2; NP_039230.1; NP_852123.1; NP_852124.1; NP_852126.1; NP_852125.1; NP_001120838.1

Blocking Peptide EBP06343

Immunogen Peptide with sequence TTLAGAVPRMM-C, from the N Terminus of the protein sequence according to NP_852122.1; NP_000429.2; NP_039230.1; NP_852123.1; NP_852124.1; NP_852126.1; NP_852125.1; NP_001120838.1.

Product Comments This antibody is expected to recognize all 8 reported isoforms (NP_852122.1; NP_000429.2; NP_039230.1; NP_852123.1; NP_852124.1; NP_852126.1; NP_852125.1; NP_001120838.1).

Peptide Sequence TTLAGAVPRMM-C

Purification Method Purified from goat serum by ammonium sulphate precipitation followed by antigen affinity chromatography using the immunizing peptide.

Shipping Instructions Refrigerated

Predicted Species	Human, Rat, Cow
Reactive Species	Human
Human Gene ID	5077
Mouse Gene ID	18505
Rat Gene ID	114502
Product Grade	https://prod-vector-labs-pimcore-assets.s3.us-east-1.amazonaws.com/assets/products/image/elite_medium.png
IHC Results	In paraffin embedded Human Esophagus expression of PAX3 is detected in squamous epithelium. Recommended concentration: 4.5µg/ml.
ELISA Detection Limit	Antibody detection limit dilution 1:32000.
Western Blot	Approx 45kDa band observed in lysates of Human Duodenum, Skin, and in lysates of cell lines A431 (calculated MW of 45.2kDa according to NP_852125.1 and of 44.8kDa according to NP_852126.1). Recommended concentration: 0.3-1µg/ml. Primary incubation was 1 hour.
Application Type	Pep-ELISA, WB, IHC

DOCUMENTS

- [Data Sheet](#)

GALLERY IMAGES

