

## GOAT ANTI-PAX3, BIOTINYLATED ANTIBODY

**SKU:** EB06343-B

250kDa

150kDa

100kDa

75kDa

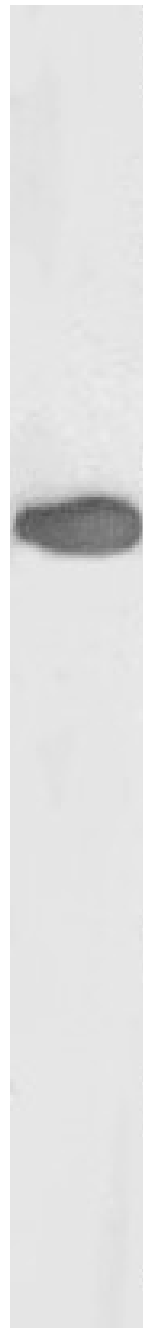
50kDa

37kDa

25kDa

20kDa

15kDa



## SPECIFICATIONS

<b>Formulation</b>	Supplied at 0.5 mg/ml in Tris saline, 0.02% sodium azide, pH7.3 with 0.5% bovine serum albumin.
<b>Unit Size</b>	100 µg
<b>Storage</b>	
<b>Instructions</b>	Aliquot and store at -20°C. Minimize freezing and thawing.
<b>Synonym / Alias</b>	paired domain gene HuP2 paired domain gene 3 paired box homeotic gene 3 WS3 WS1 HUP2 CDHS paired box 3 PAX3
<b>Names</b>	
<b>Accession ID</b>	NP_852122.1; NP_000429.2; NP_039230.1; NP_852123.1; NP_852124.1; NP_852126.1; NP_852125.1; NP_001120838.1
<b>Blocking Peptide</b>	EBP06343-B
<b>Immunogen</b>	Peptide with sequence TTLAGAVPRMMC., from the N Terminus of the protein sequence according to NP_852122.1; NP_000429.2; NP_039230.1; NP_852123.1; NP_852124.1; NP_852126.1; NP_852125.1; NP_001120838.1.
<b>Product Comments</b>	This antibody is expected to recognize all 8 reported isoforms (NP_852122.1; NP_000429.2; NP_039230.1; NP_852123.1; NP_852124.1; NP_852126.1; NP_852125.1; NP_001120838.1).
<b>Peptide Sequence</b>	TTLAGAVPRMMC.
<b>Purification Method</b>	Purified from goat serum by ammonium sulphate precipitation followed by antigen affinity chromatography using the immunizing peptide.
<b>Shipping Instructions</b>	Refrigerated
<b>Predicted Species</b>	Human, Mouse, Rat, Cow
<b>Reactive Species</b>	Human
<b>Human Gene ID</b>	5077
<b>Mouse Gene ID</b>	18505
<b>Rat Gene ID</b>	114502
<b>Product Grade</b>	<a href="https://prod-vector-labs-pimcore-assets.s3.us-east-1.amazonaws.com/assets/products/image/elite_medium.png">https://prod-vector-labs-pimcore-assets.s3.us-east-1.amazonaws.com/assets/products/image/elite_medium.png</a>
<b>ELISA Detection Limit</b>	Antibody detection limit dilution 1:32000.
<b>Western Blot</b>	Approx 45kDa band observed in Human Duodenum lysates (calculated MW of 45.2kDa according to NP_852125.1 and 44.8kDa according to NP_852126.1). See non-biotinylated parental product's datasheet for further QC data. Recommended concentration: 0.3-1µg/ml.
<b>Application Type</b>	Pep-ELISA, WB

## DOCUMENTS

- [Data Sheet](#)

## GALLERY IMAGES

