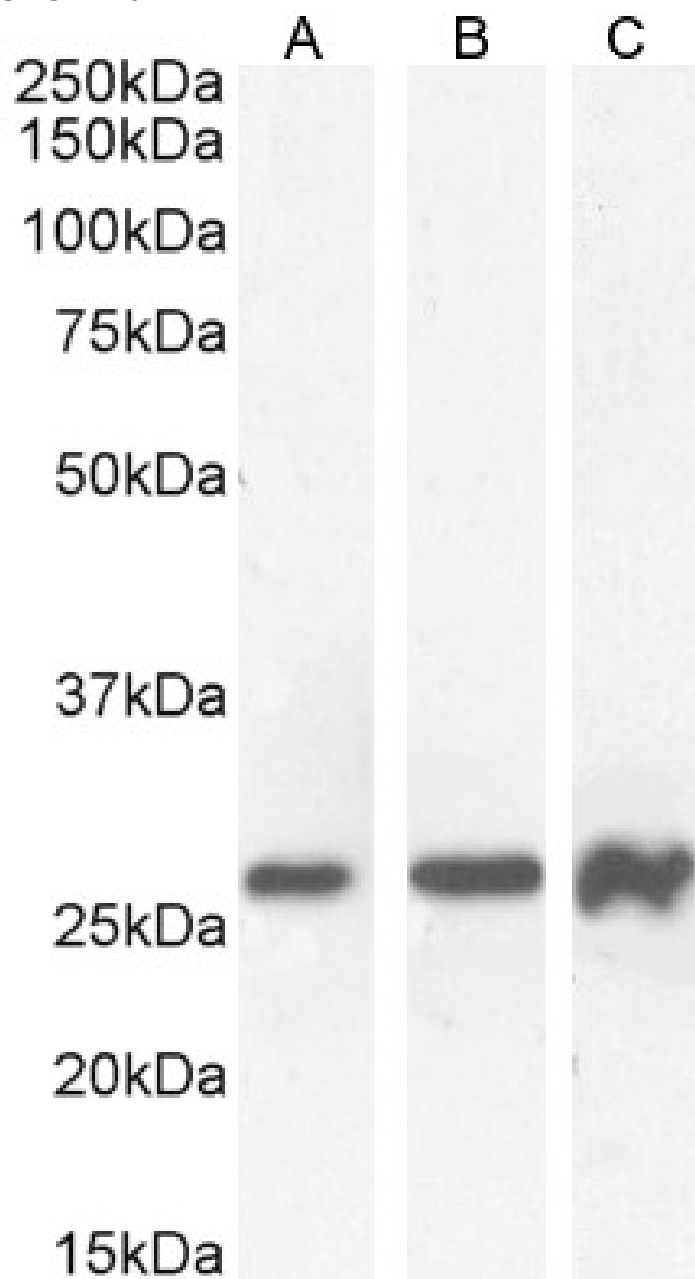


GOAT ANTI-PAX6 (INTERNAL) ANTIBODY

SKU: EB07772



SPECIFICATIONS

Formulation	Supplied at 0.5 mg/ml in Tris saline, 0.02% sodium azide, pH7.3 with 0.5% bovine serum albumin.
Unit Size	100 µg
Storage	Aliquot and store at -20°C. Minimize freezing and thawing.
Instructions	
Synonym / Alias	paired box homeotic gene-6 paired box homeotic gene 6 (aniridia, keratitis) paired box gene 6 WAGR MGDA MGC17209 D11S812E AN2 AN paired box gene 6 (aniridia, keratitis) PAX6
Names	
Usage	Flow Cytometry: Flow cytometric analysis of U251 cells. Recommended concentration: 10ug/ml.
Summary	
Accession ID	NP_000271.1; NP_001595.2; NP_001297088.1; NP_001355839.1; NP_001355840.1; NP_001355841.1; NP_001355844.1; NP_001355847.1; NP_001355849.1; NP_001355850.1; NP_001355851.1; NP_001355857.1; NP_001355858.1; NP_001355859.1
Blocking Peptide	EBP07772
Immunogen	Peptide with sequence C-REEKLRNQRRQASN, from the internal region of the protein sequence according to NP_000271.1; NP_001595.2; NP_001297088.1; NP_001355839.1; NP_001355840.1; NP_001355841.1; NP_001355844.1; NP_001355847.1; NP_001355849.1; NP_001355850.1; NP_001355851.1; NP_001355857.1; NP_001355858.1; NP_001355859.1.
Product Comments	This antibody is expected to recognize all reported isoforms: NP_000271.1; NP_001595.2; NP_001297088.1; NP_001355839.1; NP_001355840.1; NP_001355841.1; NP_001355844.1; NP_001355847.1; NP_001355849.1; NP_001355850.1; NP_001355851.1; NP_001355857.1; NP_001355858.1; NP_001355859.1.
Peptide Sequence	C-REEKLRNQRRQASN
Purification Method	Purified from goat serum by ammonium sulphate precipitation followed by antigen affinity chromatography using the immunizing peptide.
Shipping Instructions	Refrigerated
Predicted Species	Human, Mouse, Rat, Dog, Cow
Reactive Species	Human, Mouse
Human Gene ID	5080
Mouse Gene ID	18508
Rat Gene ID	25509
Product Grade	https://prod-vector-labs-pimcore-assets.s3.us-east-1.amazonaws.com/assets/products/image/elite_medium.png
ELISA	
Detection Limit	Antibody detection limit dilution 1:32000.
Western Blot	Approx 26kDa band observed in lysates of cell lines U251 and RAW264.7 and in nuclear lysates of cell lines K562 and HeLa, all successfully blocked by incubation with the immunising peptide (calculated MW of 24.8kDa according to Human NP_001355859.1 and 31.8 according to Mouse NP_001297075.1). Recommended concentration: 0.03-1µg/ml. Primary incubation 1 hour at room temperature.
Application Type	Pep-ELISA, WB, FC

DOCUMENTS

- [Data Sheet](#)

GALLERY IMAGES

