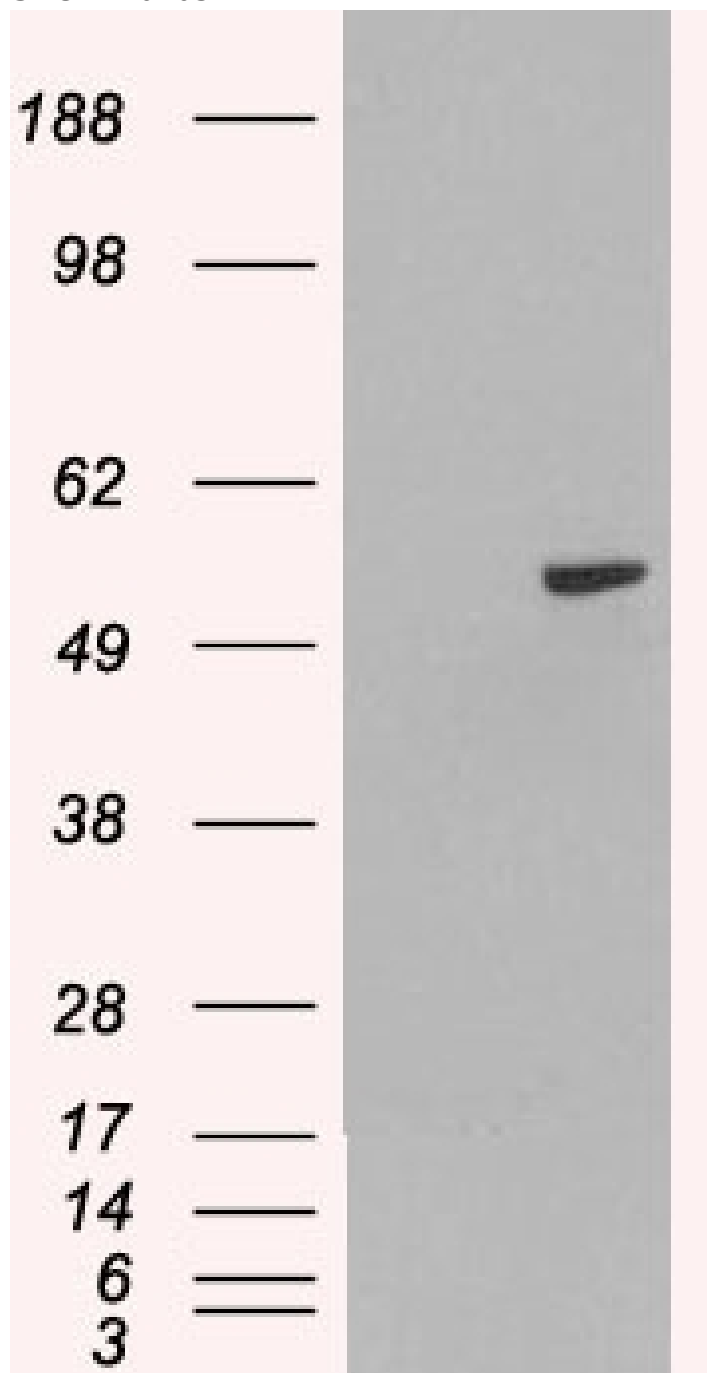


GOAT ANTI-PAX8 (INTERNAL) ANTIBODY

SKU: EB07037



SPECIFICATIONS

Formulation	Supplied at 0.5 mg/ml in Tris saline, 0.02% sodium azide, pH7.3 with 0.5% bovine serum albumin.
Unit Size	100 µg
Storage	Aliquot and store at -20°C. Minimize freezing and thawing.
Instructions	
Synonym /	
Alias	paired box 8 paired domain gene 8 HGNC:8622 paired box gene 8 PAX8
Names	
Accession ID	NP_003457.1; NP_039245.1; NP_039246.1; NP_039247.1; NP_054698.1
Blocking Peptide	EBP07037
Immunogen	Peptide with sequence C-AQPGSDKRKMDD, from the internal region of the protein sequence according to NP_003457.1; NP_039245.1; NP_039246.1; NP_039247.1; NP_054698.1.
Product	This antibody is expected to recognise all reported isoforms (NP_003457.1; NP_039245.1; NP_039246.1; NP_039247.1; NP_054698.1)
Comments	
Peptide Sequence	C-AQPGSDKRKMDD
Purification Method	Purified from goat serum by ammonium sulphate precipitation followed by antigen affinity chromatography using the immunizing peptide.
Shipping Instructions	Refrigerated
Predicted Species	Human
Reactive Species	Human
Human Gene ID	7849
Product Grade	https://prod-vector-labs-pimcore-assets.s3.us-east-1.amazonaws.com/assets/products/image/elite_medium.png
ELISA	
Detection Limit	Antibody detection limit dilution 1:32000.
Western Blot	In transfected HEK293 transiently expressing PAX8A a band of approx. 55kDa is observed. This band is not observed in the non-transfected HEK293. Recommended concentration: 0.5-1.5µg/ml.
Application Type	Pep-ELISA, WB-Trf

DOCUMENTS

- [Data Sheet](#)

GALLERY IMAGES

