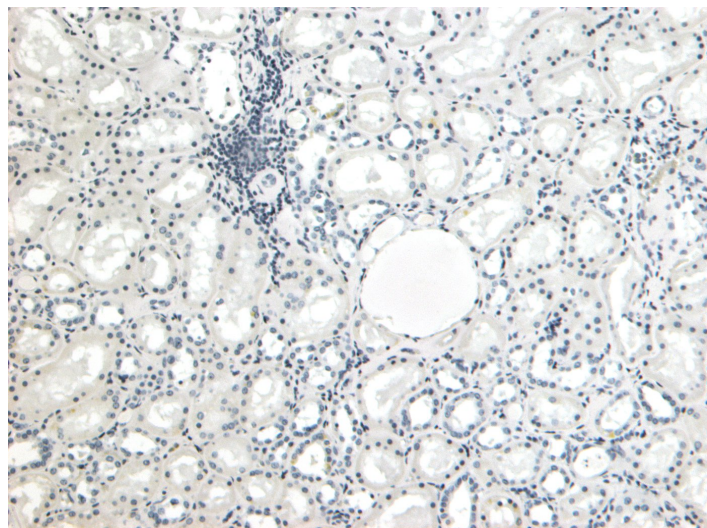


GOAT ANTI-PAX8 (N TERMINUS) ANTIBODY

SKU: EB05513



SPECIFICATIONS

Formulation	Supplied at 0.5 mg/ml in Tris saline, 0.02% sodium azide, pH7.3 with 0.5% bovine serum albumin.
Unit Size	100 µg
Storage	Aliquot and store at -20°C. Minimize freezing and thawing.
Instructions	
Synonym /	
Alias	paired box 8 paired domain gene 8 paired box gene 8 PAX8
Names	
Accession ID	NP_003457.1; NP_039245.1; NP_039246.1; NP_039247.1; NP_054698.1
Blocking Peptide	EBP05513
Immunogen	Peptide with sequence PHNSIRSGHGGLN-C, from the N Terminus of the protein sequence according to NP_003457.1; NP_039245.1; NP_039246.1; NP_039247.1; NP_054698.1.
Product	This antibody is expected to recognise all five human isoforms (as represented by NP_003457.1; NP_039245.1; NP_039246.1; NP_039247.1; NP_054698.1)
Comments	
Peptide Sequence	PHNSIRSGHGGLN-C
Purification Method	Purified from goat serum by ammonium sulphate precipitation followed by antigen affinity chromatography using the immunizing peptide.

Shipping Instructions	Refrigerated
Predicted Species	Human, Mouse, Rat
Reactive Species	Human
Human Gene ID	7849
Mouse Gene ID	18510
Rat Gene ID	81819
Product Grade	https://prod-vector-labs-pimcore-assets.s3.us-east-1.amazonaws.com/assets/products/image/elite_medium.png
IHC Results	Paraffin embedded Human Kidney. Recommended concentration: 4-5µg/ml.
ELISA	
Detection Limit	Antibody detection limit dilution 1:64000.
Western Blot	Approx 48kDa band observed in Human Liver lysates. An additional 35kDa band was also observed in some Liver and HEK293 cell lysates (calculated MW of 34.9kDa according to Human NP_039247.1 PAX8D and 48.2kDa according to Human NP_003457.1 PAXA). Recommended concentration: 0.3-1µg/ml. Primary incubation 1 hour at room temperature.
Application Type	Pep-ELISA, WB, IHC

DOCUMENTS

- [Data Sheet](#)

GALLERY IMAGES

