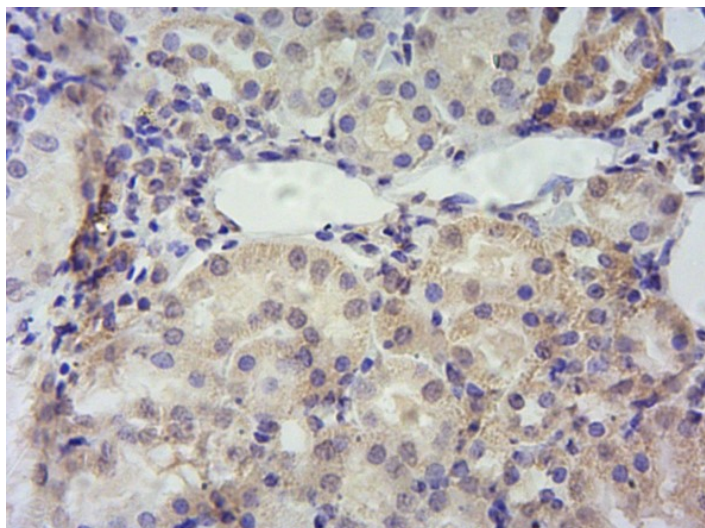


GOAT ANTI-PBR (MOUSE) ANTIBODY

SKU: EB09203



SPECIFICATIONS

Formulation	Supplied at 0.5 mg/ml in Tris saline, 0.02% sodium azide, pH7.3 with 0.5% bovine serum albumin.
Unit Size	100 µg
Storage Instructions	Aliquot and store at -20°C. Minimize freezing and thawing.
Synonym / Alias Names	peripheral benzodiazepine receptor isoquinoline-binding protein benzodiazepine receptor, peripheral IBP Bzrp translocator protein Tspo PBR
Usage Summary	Flow Cytometry: Flow cytometric analysis of NIH3T3 cells. Recommended concentration: 10ug/ml.
Accession ID	NP_033905.3
Blocking Peptide	EBP09203
Immunogen	Peptide with sequence C-RDNSGRRGGSRLPE, from the C Terminus of the protein sequence according to NP_033905.3.
Peptide Sequence	C-RDNSGRRGGSRLPE
Purification Method	Purified from goat serum by ammonium sulphate precipitation followed by antigen affinity chromatography using the immunizing peptide.
Shipping Instructions	Refrigerated

Predicted Species	Mouse, Rat, Human
Reactive Species	Mouse
Mouse Gene ID	12257
Rat Gene ID	24230
Product Grade	https://prod-vector-labs-pimcore-assets.s3.us-east-1.amazonaws.com/assets/products/image/elite_plus_medium.png
IHC Results	Paraffin embedded Mouse Kidney and Colon. Recommended concentration: 5-10µg/ml.
ELISA	
Detection Limit	Antibody detection limit dilution 1:128000.
Western Blot	Approx.16-17kDa band observed in Mouse Kidney lysates and in lysates of cell line NIH3T3 (calculated MW of 18.8kDa according to NP_033905.3). Recommended concentration: 0.01-0.03µg/ml. Primary incubation 1 hour at room temperature.
Application Type	Pep-ELISA, WB, IHC, FC

SELECTED REFERENCES

[{"pmid": 22375007, "intro": "**This antibody (previous batch) has been successfully used in Western blot on Mouse:**", "title": "Deregulated hepatic metabolism exacerbates impaired testosterone production in Mrp4-deficient mice.", "author": "Morgan JA, Cheepala SB, Wang Y, Neale G, Adachi M, Nachagari D, Leggas M, Zhao W, Boyd K, Venkataramanan R, Schuetz JD.", "journal": "J Biol Chem. 2012 Apr 27;287(18):14456-66."}]

DOCUMENTS

- [Data Sheet](#)

GALLERY IMAGES

