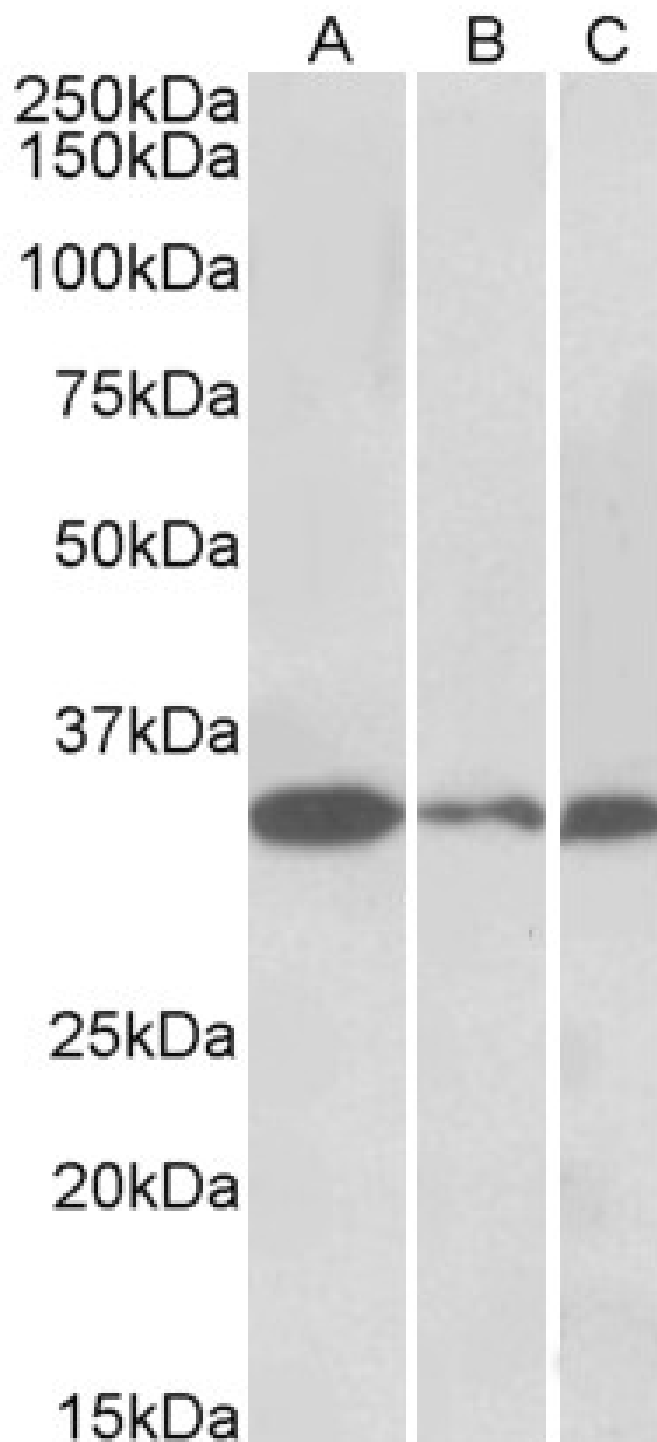




GOAT ANTI-PCNA ANTIBODY

SKU: EB11650





SPECIFICATIONS

Formulation Supplied at 0.5 mg/ml in Tris saline, 0.02% sodium azide, pH7.3 with 0.5% bovine serum albumin.

Unit Size 100 µg

Storage Instructions Aliquot and store at -20°C. Minimize freezing and thawing.

Synonym / Alias Names ATLD2|proliferating cell nuclear antigen|PCNA|OTTHUMP00000030190|MGC8367|DNA polymerase delta auxiliary protein|cyclin

Usage Summary Additional validation: This antibody has been successfully used in the following paper: Sikorski et al. (2018) PMID: 30377371.

Accession ID NP_002583.1

Blocking Peptide EBP11650

Immunogen Peptide with sequence C-NGNIKLSQTSNVD, from the internal region of the protein sequence according to NP_002583.1.

Product Comments Reported variants represent identical protein: NP_872590.1, NP_002583.1

Peptide Sequence C-NGNIKLSQTSNVD

Purification Method Purified from goat serum by ammonium sulphate precipitation followed by antigen affinity chromatography using the immunizing peptide.

Shipping Instructions Refrigerated

Predicted Species Human, Mouse, Rat, Dog, Pig, Cow

Reactive Species Human, Mouse, Rat, Pig

Human Gene ID 5111

Mouse Gene ID 18538

Rat Gene ID 25737

Product Grade https://prod-vector-labs-pimcore-assets.s3.us-east-1.amazonaws.com/assets/products/image/elite_medium.png

IHC Results Paraffin embedded Human Testis. Recommended concentration: 5-6µg/ml.

ELISA

Detection Limit Antibody detection limit dilution 1:128000.



**Western
Blot**

Approx 30kDa band observed in lysates of cell line HeLa (calculated MW of 28.8kDa according to Human NP_002583.1). Approx.33kDa band observed in lysates of cell line NIH3T3 and in Mouse and Rat Testis and Pig Spleen lysates (calculated MW of 28.8kDa according to Mouse NP_035175.1, Rat NP_071776.1 and Pig NP_001278854.1). Primary incubation was 1 hour. The observed molecular weight corresponds to earlier findings in literature with different antibodies (Gilljam et al, , J Cell Biol. 2009 Sep 7;186(5):645-54.). Recommended concentration: 0.01-0.03µg/ml.

**Application
Type**

Pep-ELISA, WB, IHC

SELECTED REFERENCES

[{"pmid": 30377371, "intro": "**This antibody has been successfully used in the following paper:**", "title": "A high-throughput pipeline for validation of antibodies", "author": "Krzysztof Sikorski, Adi Mehta, Marit Inngjerdingen, Flourina Thakor, Simon Kling, Tomas Kalina, Tuula A. Nyman, Maria Ekman Stensland, Wei Zhou, Gustavo A. De Souza, Lars Holden, Jan Stuchly, Markus Templin and Fridtjof Lund-Johansen", "journal": "Nat Methods. 2018 Nov;15(11):909-912"}]

DOCUMENTS

- [Data Sheet](#)

GALLERY IMAGES

