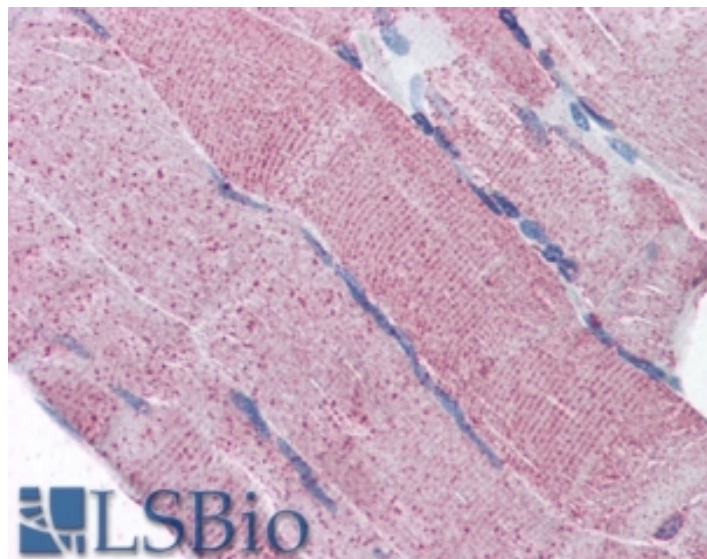


GOAT ANTI-PCSK6 ANTIBODY

SKU: EB08897



SPECIFICATIONS

Formulation Supplied at 0.5 mg/ml in Tris saline, 0.02% sodium azide, pH7.3 with 0.5% bovine serum albumin.

Unit Size 100 µg

Storage Instructions Aliquot and store at -20°C. Minimize freezing and thawing.

Synonym / Alias Names subtilisin/kexin-like protease PACE4|subtilisin-like protease|subtilisin-like proprotein convertase 4|paired basic amino acid cleaving system 4|SPC4|PACE4|proprotein convertase subtilisin/kexin type 6|PCSK6

Accession ID NP_002561.1; NP_612192.1; NP_612195.1; NP_612197.1; NP_612196.1; NP_612198.2; NP_612193.1; NP_612194.1

Blocking Peptide EBP08897

Immunogen Peptide with sequence C-YHTFSAHQSRSR, from the internal region of the protein sequence according to NP_002561.1; NP_612192.1; NP_612195.1; NP_612197.1; NP_612196.1; NP_612198.2; NP_612193.1; NP_612194.1.

Product Comments This antibody is expected to recognize reported isoforms a, b, g and h (NP_002561.1; NP_612192.1; NP_612193.1; NP_612194.1 resp.).

Peptide Sequence C-YHTFSAHQSRSR

| | |
|------------------------------|---|
| Purification Method | Purified from goat serum by ammonium sulphate precipitation followed by antigen affinity chromatography using the immunizing peptide. |
| Shipping Instructions | Refrigerated |
| Predicted Species | Human |
| Reactive Species | Human |
| Human Gene ID | 5046 |
| Product Grade | https://prod-vector-labs-pimcore-assets.s3.us-east-1.amazonaws.com/assets/products/image/elite_medium.png |
| IHC Results | Paraffin embedded Human Skeletal Muscle and Kidney. Recommended concentration: 5µg/ml. |
| ELISA Detection Limit | Antibody detection limit dilution 1:32000. |
| Western Blot | Preliminary experiments gave an approx 40-45 kDa band in Human Brain (Cerebellum) lysates after 0.2 µg/ml antibody staining. Please note that currently we cannot find an explanation in the literature for the band we observe given the calculated size of 106 kDa according to NP_002561.1. The 40-45 kDa band was successfully blocked by incubation with the immunizing peptide. |
| Application Type | Pep-ELISA, IHC |

DOCUMENTS

- [Data Sheet](#)

GALLERY IMAGES

