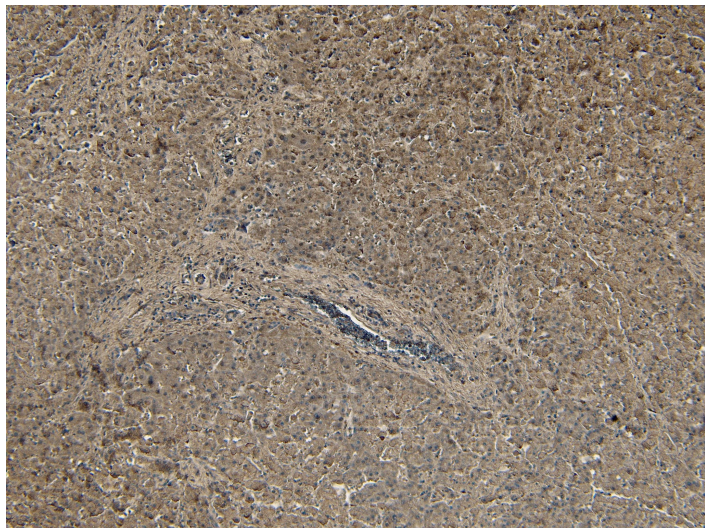


# GOAT ANTI-PCSK9 (C TERMINUS) ANTIBODY

**SKU:** EB06682



## SPECIFICATIONS

**Formulation** Supplied at 0.5 mg/ml in Tris saline, 0.02% sodium azide, pH7.3 with 0.5% bovine serum albumin.

**Unit Size** 100 µg

**Storage Instructions** Aliquot and store at -20°C. Minimize freezing and thawing.

**Synonym / Alias Names** NARC-1|LDLCQ1|proprotein convertase subtilisin/kexin type 9|hypercholesterolemia, autosomal dominant 3|neural apoptosis regulated convertase 1|proprotein convertase subtilisin/kexin type 9|HCHOLA3|NARC1|FH3|PCSK9

**Accession ID** NP\_777596.2

**Blocking Peptide** EBP06682

**Immunogen** Peptide with sequence CRSRHQAASQELQ, from the C Terminus of the protein sequence according to NP\_777596.2.

**Peptide Sequence** CRSRHQAASQELQ

**Purification Method** Purified from goat serum by ammonium sulphate precipitation followed by antigen affinity chromatography using the immunizing peptide.

**Shipping Instructions** Refrigerated

|                          |  |
|--------------------------|--|
| <b>Predicted Species</b> | Human  |
| <b>Reactive Species</b>  | Human  |
| <b>Human Gene ID</b>     | 255738   |
| <b>Product Grade</b>     | <a href="https://prod-vector-labs-pimcore-assets.s3.us-east-1.amazonaws.com/assets/products/image/elite_medium.png">https://prod-vector-labs-pimcore-assets.s3.us-east-1.amazonaws.com/assets/products/image/elite_medium.png</a>  |
| <b>IHC Results</b>       | Paraffin embedded Human Liver. Recommended concentration: 5-6µg/ml.  |
| <b>ELISA</b>             |  |
| <b>Detection Limit</b>   | Antibody detection limit dilution 1:16000.   |
| <b>Western Blot</b>      | Approx 75kDa band observed in Human Adipose lysates (calculated MW of 74.3kDa according to NP_777596.2). Recommended concentration: 0.3-1µg/ml. Primary incubation was 1 hour. Constructs and lysates were as described in Sun et al Hum Mol Genet. 2005 May 1;14(9):1161-9, PMID: 15772090. A customer found positive results in WB on Human Liver. |
| <b>Application Type</b>  | Pep-ELISA, WB, IHC   |

## DOCUMENTS

- [Data Sheet](#)

## GALLERY IMAGES

