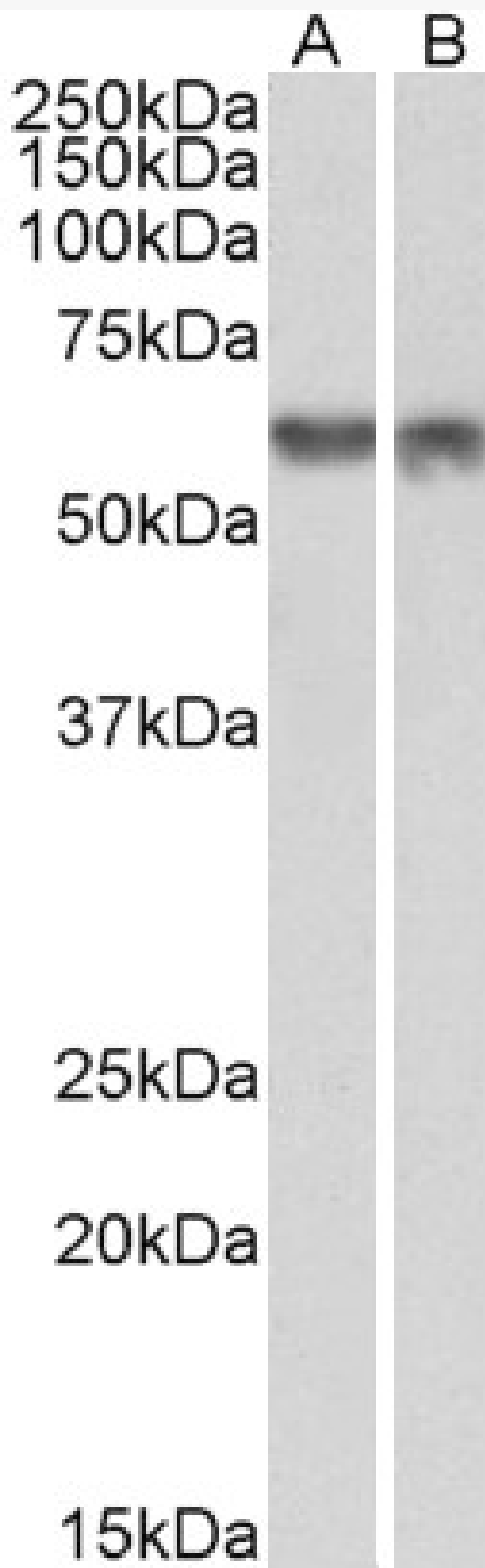


# GOAT ANTI-PDCD4 ANTIBODY

**SKU:** EB11582



## SPECIFICATIONS

**Formulation** Supplied at 0.5 mg/ml in Tris saline, 0.02% sodium azide, pH7.3 with 0.5% bovine serum albumin.

**Unit Size** 100 µg

**Storage Instructions** Aliquot and store at -20°C. Minimize freezing and thawing.

**Synonym / Alias Names** H731|MGC33046|MGC33047|neoplastic transformation inhibitor protein|nuclear antigen H731|OTTHUMP00000020483|PDCD4|programmed cell death 4 (neoplastic transformation inhibitor)|programmed cell death protein 4|protein 197/15a

**Accession ID** NP\_055271.2; NP\_663314.1; NP\_001186421.1

**Blocking Peptide** EBP11582

**Immunogen** Peptide with sequence DSYKGTVDVCVQAR, from the internal region of the protein sequence according to NP\_055271.2; NP\_663314.1; NP\_001186421.1.

**Product Comments** This antibody is expected to recognize all reported isoforms (NP\_055271.2; NP\_663314.1; NP\_001186421.1).

**Peptide Sequence** DSYKGTVDVCVQAR

**Purification Method** Purified from goat serum by ammonium sulphate precipitation followed by antigen affinity chromatography using the immunizing peptide.

**Shipping Instructions** Refrigerated

**Predicted Species** Human, Mouse, Rat, Dog, Pig, Cow

**Reactive Species** Human, Mouse

**Human Gene ID** 27250

**Mouse Gene ID** 18569

**Rat Gene ID** 64031

**Product Grade** [https://prod-vector-labs-pimcore-assets.s3.us-east-1.amazonaws.com/assets/products/image/elite\\_medium.png](https://prod-vector-labs-pimcore-assets.s3.us-east-1.amazonaws.com/assets/products/image/elite_medium.png)

**ELISA Detection Limit** Antibody detection limit dilution 1:128000.

**Western Blot** Approx 60kDa band observed in nuclear lysates of cell lines NIH3T3 and HeLa (calculated MW of 51.7kDa according to NP\_055271.2). Recommended concentration: 1-3µg/ml.

**Application Type** Pep-ELISA, WB

## DOCUMENTS

- [Data Sheet](#)

## GALLERY IMAGES

