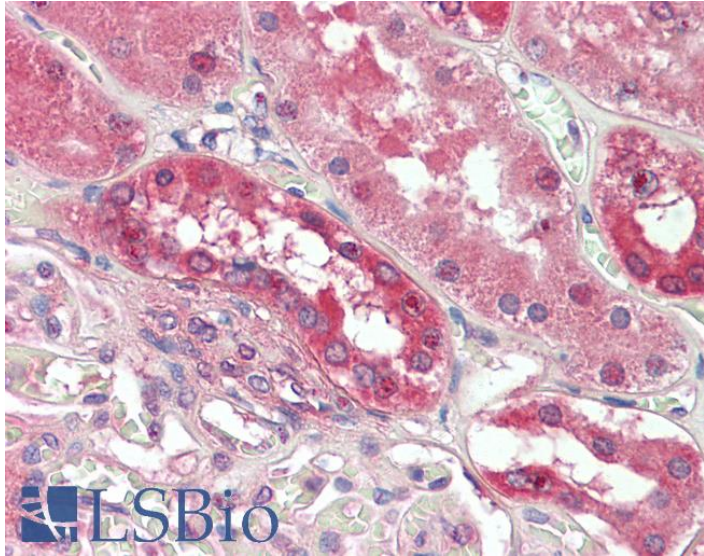


GOAT ANTI-PDE1A ANTIBODY

SKU: EB09802



SPECIFICATIONS

| | |
|------------------------------|--|
| Formulation | Supplied at 0.5 mg/ml in Tris saline, 0.02% sodium azide, pH7.3 with 0.5% bovine serum albumin. |
| Unit Size | 100 µg |
| Storage Instructions | Aliquot and store at -20°C. Minimize freezing and thawing. |
| Synonym / Alias Names | 3', 5' cyclic nucleotide phosphodiesterase calcium/calmodulin-stimulated cyclic nucleotide phosphodiesterase calmodulin-dependent phosphodiesterase HCAM1 HSPDE1A MGC26303 phosphodiesterase 1A, calmodulin-dependent phosphodiesterase-1A PDE1A |
| Accession ID | NP_005010.2 |
| Blocking Peptide | EBP09802 |
| Immunogen | Peptide with sequence C-DLHKNSDLVNAE, from the C Terminus of the protein sequence according to NP_005010.2. |
| Product Comments | This antibody is expected to recognize isoform 1 (NP_005010.2) only. |
| Peptide Sequence | C-DLHKNSDLVNAE |
| Purification Method | Purified from goat serum by ammonium sulphate precipitation followed by antigen affinity chromatography using the immunizing peptide. |

| | |
|------------------------------|---|
| Shipping Instructions | Refrigerated |
| Predicted Species | Human, Mouse, Rat, Cow |
| Reactive Species | Human |
| Human Gene ID | 5136 |
| Mouse Gene ID | 18573 |
| Rat Gene ID | 81529 |
| Product Grade | https://prod-vector-labs-pimcore-assets.s3.us-east-1.amazonaws.com/assets/products/image/elite_medium.png |
| IHC Results | Paraffin embedded Human Kidney. Recommended concentration: 3.75µg/ml. |
| ELISA | |
| Detection Limit | Antibody detection limit dilution 1:64000. |
| Western Blot | Approx 55kDa band observed in Human Brain (Cerebellum) lysates (calculated MW of 62.3kDa according to NP_005010.2). Recommended concentration: 1-3µg/ml. Primary incubation was 1 hour. |
| Application Type | Pep-ELISA, WB, IHC |

DOCUMENTS

- [Data Sheet](#)

GALLERY IMAGES

