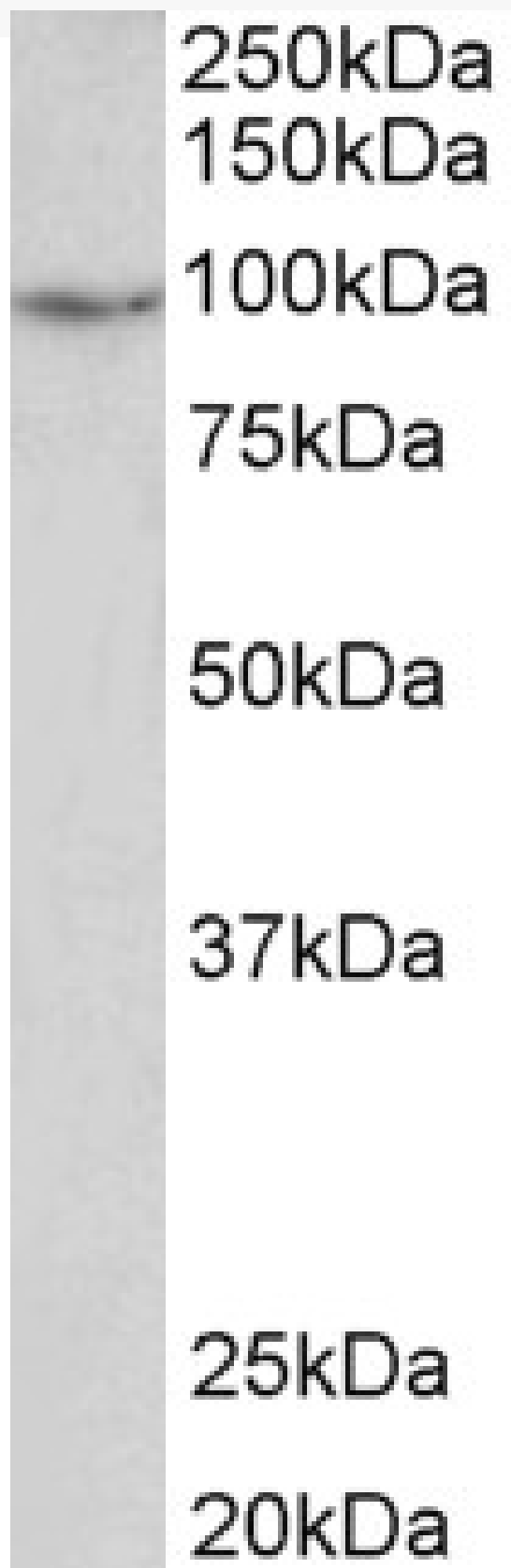


GOAT ANTI-PDE4B ANTIBODY

SKU: EB05003



SPECIFICATIONS

Formulation	Supplied at 0.5 mg/ml in Tris saline, 0.02% sodium azide, pH7.3 with 0.5% bovine serum albumin.
Unit Size	100 µg
Storage Instructions	Aliquot and store at -20°C. Minimize freezing and thawing.
Synonym / Alias Names	PDE4B phosphodiesterase 4B, cAMP-specific (phosphodiesterase E4 dunce homolog, Drosophila) DPDE4 PDEIVB Phosphodiesterase-4B, cAMP-specific (dunce (Drosophila)-homolog phosphodiesterase 4B, cAMP-specific (dunce (Drosophila)-homolog phosphodiesterase E4)
Accession ID	NP_002591.2; NP_001032416.1; NP_001032417.1
Blocking Peptide	EBP05003
Immunogen	Peptide with sequence C-IDIATEDKSPVDT, from the C Terminus of the protein sequence according to NP_002591.2; NP_001032416.1; NP_001032417.1.
Product Comments	This antibody is expected to recognize all reported isoforms (NP_002591.2; NP_001032416.1; NP_001032417.1).
Peptide Sequence	C-IDIATEDKSPVDT
Purification Method	Purified from goat serum by ammonium sulphate precipitation followed by antigen affinity chromatography using the immunizing peptide.
Shipping Instructions	Refrigerated
Predicted Species	Human, Mouse
Reactive Species	Human
Human Gene ID	5142
Mouse Gene ID	18578
Product Grade	https://prod-vector-labs-pimcore-assets.s3.us-east-1.amazonaws.com/assets/products/image/elite_medium.png
ELISA Detection Limit	Antibody detection limit dilution 1:32000.
Western Blot	Approx 98kDa band observed in Human Uterus lysates (calculated MW of 83.3kDa according to NP_002591.2). The observed molecular weight corresponds to earlier findings in literature with different antibodies (Méhats et al, Endocrinology. 1999 Jul;140(7):3228-37. PMID: 10385419). Recommended concentration: 1-3µg/ml.
Application Type	Pep-ELISA, WB

DOCUMENTS

- [Data Sheet](#)

GALLERY IMAGES

