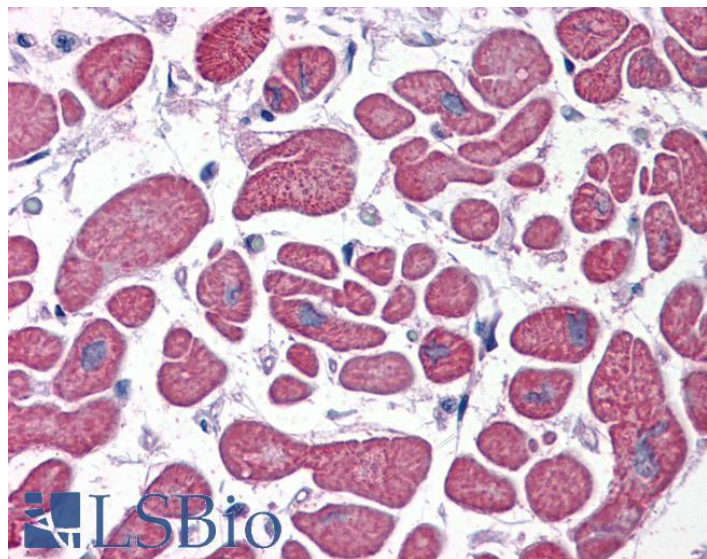


GOAT ANTI-PDE4D ANTIBODY

SKU: EB07046



SPECIFICATIONS

Formulation	Supplied at 0.5 mg/ml in Tris saline, 0.02% sodium azide, pH7.3 with 0.5% bovine serum albumin.
Unit Size	100 µg
Storage Instructions	Aliquot and store at -20°C. Minimize freezing and thawing.
Synonym / Alias Names	phosphodiesterase 4D FLJ97311 DKFZp686M11213 phosphodiesterase 4D, cAMP-specific (dunce (Drosophila)-homolog phosphodiesterase E3) dunce-like phosphodiesterase E3 cAMP-specific phosphodiesterase PDE4D6 cAMP-specific phosphodiesterase 4D STRK1 PDE4DN2 HSPDE4D DPDE3 HGNC:8783 phosphodiesterase 4D, cAMP-specific (phosphodiesterase E3 dunce homolog, Drosophila) PDE4D
Usage Summary	ELISA: This antibody has been successfully used in ELISA as described in the following paper: Bazhin et al, Mol Immunol. 2010 Jan;47(4):678-84.; PMID: 19939455.
Accession ID	NP_001184151.1; NP_001184150.1; NP_006194.2; NP_001098101.1; NP_001184152.1; NP_001159371.1
Blocking Peptide	EBP07046
Immunogen	Peptide with sequence QPEACVIDDRSPDT, from the C Terminus of the protein sequence according to NP_001184151.1; NP_001184150.1; NP_006194.2; NP_001098101.1; NP_001184152.1; NP_001159371.1.
Product Comments	This antibody is expected to recognize all reported isoforms.
Peptide Sequence	QPEACVIDDRSPDT

Purification Method	Purified from goat serum by ammonium sulphate precipitation followed by antigen affinity chromatography using the immunizing peptide.
Shipping Instructions	Refrigerated
Predicted Species	Human
Reactive Species	Human
Human Gene ID	5144
Product Grade	https://prod-vector-labs-pimcore-assets.s3.us-east-1.amazonaws.com/assets/products/image/elite_plus_medium.png
IHC Results	Paraffin embedded Human Skeletal Muscle and Heart. Recommended concentration: 5µg/ml.
ELISA Detection Limit	Antibody detection limit dilution 1:128000.
Western Blot	Approx 70+80+90kDa bands observed in lysates of cell line A549. In transfected COS1 transiently expressing PDE4D1 and PDE4D3 bands of approx. 68kDa and 95kDa are observed. These bands are not observed in the untransfected COS1. Calculated MW of 91.1kDa according to PDE4D1 (NP_001098101.1), 76.5kDa according to PDE4D2 (NP_006194.2) and 84.7kDa according to PDE4D3 (NP_001159371.1). Recommended concentration: 0.1-0.3µg/ml.
Application Type	Pep-ELISA, WB-Trf, IHC, EIA

SELECTED REFERENCES

[{"pmid": 19939455, "intro": "**This antibody has been successfully used in ELISA in the following paper:**", "title": "Distinct metabolism of cyclic adenosine monophosphate in regulatory and helper CD4+ T cells.", "author": "Bazhin AV, Kahnert S, Kimpfler S, Schadendorf D, Umansky V.", "journal": "Mol Immunol. 2010 Jan;47(4):678-84."}]

DOCUMENTS

- [Data Sheet](#)

GALLERY IMAGES

