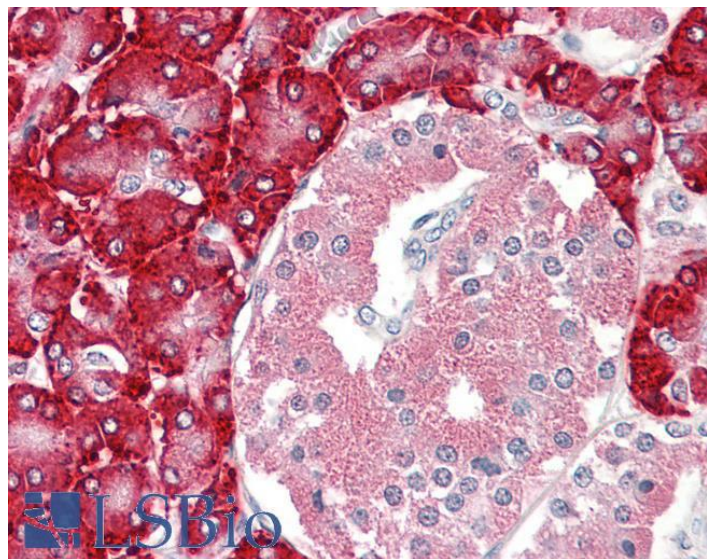


GOAT ANTI-PDIA2 (AA129-141) ANTIBODY

SKU: EB10881



SPECIFICATIONS

Formulation Supplied at 0.5 mg/ml in Tris saline, 0.02% sodium azide, pH7.3 with 0.5% bovine serum albumin.

Unit Size 100 µg

Storage Instructions Aliquot and store at -20°C. Minimize freezing and thawing.

Synonym / Alias Names PDIA2| protein disulfide isomerase family A, member 2| LA16c-314G4.2| PDA2| PDI| PDIP| PDIR| OTTHUMP00000067350| OTTHUMP00000197166| Rho GDP dissociation inhibitor gamma| pancreas-specific protein disulfide isomerase| pancreatic protein disulfide isomerase| protein disulfide isomerase A2| protein disulfide isomerase, pancreatic| protein disulfide isomerase-associated 2| protein disulfide-isomerase A2

Accession ID NP_006840.2

Blocking Peptide EBP10881

Immunogen Peptide with sequence C-THPEEYTGPRDAE, from the internal region of the protein sequence according to NP_006840.2.

Peptide Sequence C-THPEEYTGPRDAE

Purification Method Purified from goat serum by ammonium sulphate precipitation followed by antigen affinity chromatography using the immunizing peptide.

Shipping Instructions	Refrigerated
Predicted Species	Human
Reactive Species	Human
Human Gene ID	64714
Mouse Gene ID	69191
Rat Gene ID	287164
Product Grade	https://prod-vector-labs-pimcore-assets.s3.us-east-1.amazonaws.com/assets/products/image/elite_medium.png
IHC Results	Paraffin embedded Human Pancreas. Recommended concentration: 3.75µg/ml.
ELISA	
Detection Limit	Antibody detection limit dilution 1:16000.
Western Blot	Approx 70kDa band observed in Human Pancreas lysates (calculated MW of 58.2kDa according to NP_006840.2). The observed molecular weight corresponds to the glycosylated form. Recommended concentration: 0.03-0.1µg/ml. Primary incubation was 1 hour.
Application Type	Pep-ELISA, WB, IHC

DOCUMENTS

- [Data Sheet](#)

GALLERY IMAGES

