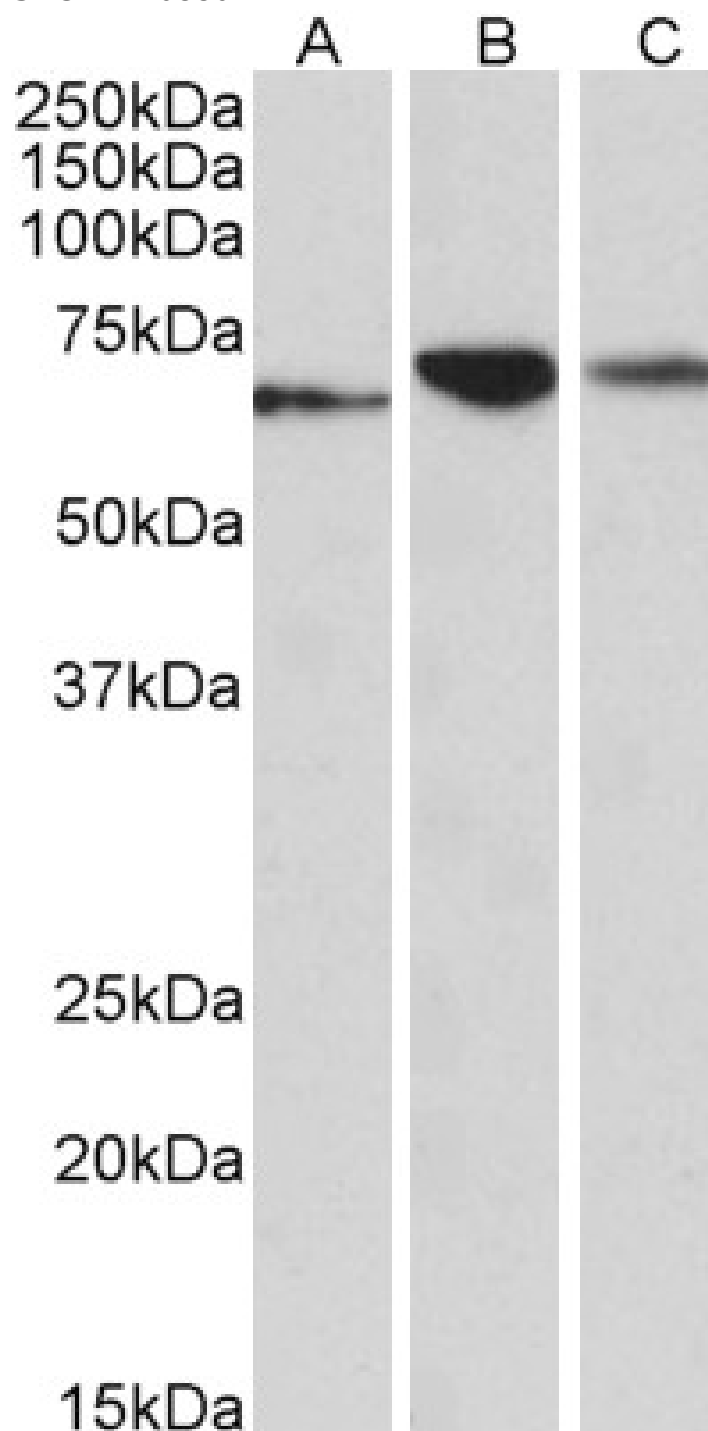


GOAT ANTI-PDIA2 (AA477-481) ANTIBODY

SKU: EB10880



SPECIFICATIONS

Formulation Supplied at 0.5 mg/ml in Tris saline, 0.02% sodium azide, pH7.3 with 0.5% bovine serum albumin.

Unit Size 100 µg

Storage Instructions Aliquot and store at -20°C. Minimize freezing and thawing.

Synonym / Alias Names protein disulfide-isomerase A2| protein disulfide isomerase-associated 2| protein disulfide isomerase, pancreatic| protein disulfide isomerase A2| pancreatic protein disulfide isomerase| pancreas-specific protein disulfide isomerase| Rho GDP dissociation inhibitor gamma| OTTHUMP00000197166| OTTHUMP00000067350| PDIR| PDIP| PDI| PDA2| LA16c-314G4.2| protein disulfide isomerase family A, member 2|PDIA2

Accession ID NP_006840.2

Blocking Peptide EBP10880

Immunogen Peptide with sequence C-EYKSTRDLETFSK, from the internal region (near C Terminus) of the protein sequence according to NP_006840.2.

Peptide Sequence C-EYKSTRDLETFSK

Purification Method Purified from goat serum by ammonium sulphate precipitation followed by antigen affinity chromatography using the immunizing peptide.

Shipping Instructions Refrigerated

Predicted Species Human, Mouse, Rat

Reactive Species Human, Mouse, Rat

Human Gene ID 64714

Mouse Gene ID 69191

Rat Gene ID 287164

Product Grade https://prod-vector-labs-pimcore-assets.s3.us-east-1.amazonaws.com/assets/products/image/elite_medium.png

IHC Results In paraffin embedded Human Pancreas shows ER staining in the beta cells of Islets of Langerhans . Recommended concentration, 3-5µg/ml.

ELISA Detection Limit Antibody detection limit dilution 1:64000.

Western Blot Approx 65kDa band observed in Human, Mouse and Rat Pancreas lysates (calculated MW of 58.2kDa according to NP_006840.2). Recommended concentration: 0.01-0.03µg/ml.

Application Type Pep-ELISA, WB, IHC

DOCUMENTS

- [Data Sheet](#)

GALLERY IMAGES

