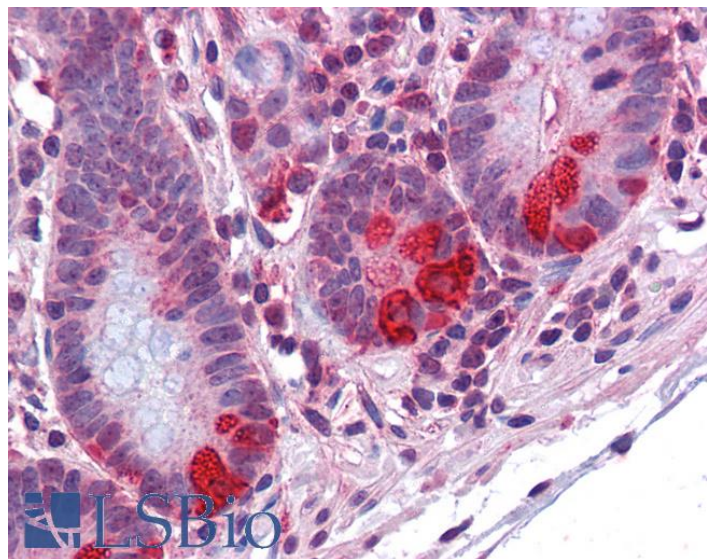


GOAT ANTI-PDIA2 / PDIP ANTIBODY

SKU: EB07722



SPECIFICATIONS

Formulation Supplied at 0.5 mg/ml in Tris saline, 0.02% sodium azide, pH7.3 with 0.5% bovine serum albumin.

Unit Size 100 µg

Storage Instructions Aliquot and store at -20°C. Minimize freezing and thawing.

Synonym / Alias Names protein disulfide isomerase-associated 2|protein disulfide isomerase, pancreatic|pancreatic protein disulfide isomerase|Rho GDP dissociation inhibitor gamma|PDIR|PDI|PDA2|LA16c-314G4.2|protein disulfide isomerase family A, member 2|PDIP|PDIA2

Accession ID NP_006840.2

Blocking Peptide EBP07722

Immunogen Peptide with sequence C-NLETTKKYAPVD, from the internal region of the protein sequence according to NP_006840.2.

Peptide Sequence C-NLETTKKYAPVD

Purification Method Purified from goat serum by ammonium sulphate precipitation followed by antigen affinity chromatography using the immunizing peptide.

Shipping Instructions Refrigerated

Predicted Species	Human, Mouse, Rat
Reactive Species	Human
Human Gene ID	64714
Mouse Gene ID	69191
Product Grade	https://prod-vector-labs-pimcore-assets.s3.us-east-1.amazonaws.com/assets/products/image/elite_medium.png
IHC Results	Paraffin embedded Human Small Intestine and Heart. Recommended concentration: 3.75µg/ml.
ELISA	
Detection Limit	Antibody detection limit dilution 1:64000.
Western Blot	Approx 60kDa band observed in Human Pancreas lysates (calculated MW of 58.2kDa according to NP_006840.2). Recommended concentration: 0.01-0.03µg/ml. Primary incubation was 1 hour.
Application Type	Pep-ELISA, WB, IHC

DOCUMENTS

- [Data Sheet](#)

GALLERY IMAGES

