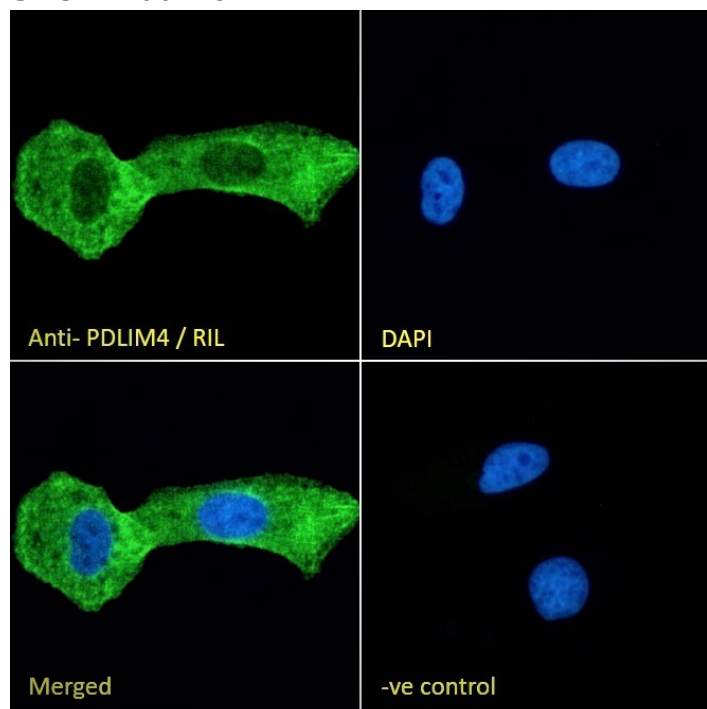


## GOAT ANTI-PDLIM4 / RIL ANTIBODY

SKU: EB06249



## SPECIFICATIONS

**Formulation** Supplied at 0.5 mg/ml in Tris saline, 0.02% sodium azide, pH7.3 with 0.5% bovine serum albumin.

**Unit Size** 100 µg

**Storage Instructions** Aliquot and store at -20°C. Minimize freezing and thawing.

**Synonym /**

**Alias Names** enigma homolog|PDZ and LIM domain 4|LIM domain protein|RIL|PDLIM4

**Usage Summary** **Immunofluorescence:** Strong expression of the protein seen in the cytoplasm of A431 and U2OS cells. Recommended concentration: 10µg/ml.

**Accession ID** NP\_003678.2

**Blocking Peptide** EBP06249

**Immunogen** Peptide with sequence C-DVVAVYPNAKVELV, from the C Terminus of the protein sequence according to NP\_003678.2.

<b>Peptide Sequence</b>	C-DVVAVYPNAKVELV
<b>Purification Method</b>	Purified from goat serum by ammonium sulphate precipitation followed by antigen affinity chromatography using the immunizing peptide.
<b>Shipping Instructions</b>	Refrigerated
<b>Predicted Species</b>	Human, Mouse, Rat, Cow
<b>Reactive Species</b>	Human
<b>Human Gene ID</b>	8572
<b>Mouse Gene ID</b>	30794
<b>Rat Gene ID</b>	24915
<b>Product Grade</b>	<a href="https://prod-vector-labs-pimcore-assets.s3.us-east-1.amazonaws.com/assets/products/image/elite_medium.png">https://prod-vector-labs-pimcore-assets.s3.us-east-1.amazonaws.com/assets/products/image/elite_medium.png</a>
<b>ELISA Detection Limit</b>	Antibody detection limit dilution 1:64000.
<b>Western Blot</b>	Approx 37kDa band observed in lysates of cell line A431 (calculated MW of 35.4kDa according to NP_003678.2). Recommended concentration: 1-3µg/ml. Primary incubation 1 hour at room temperature.
<b>Application Type</b>	Pep-ELISA, WB, IF

## DOCUMENTS

- [Data Sheet](#)

## GALLERY IMAGES

