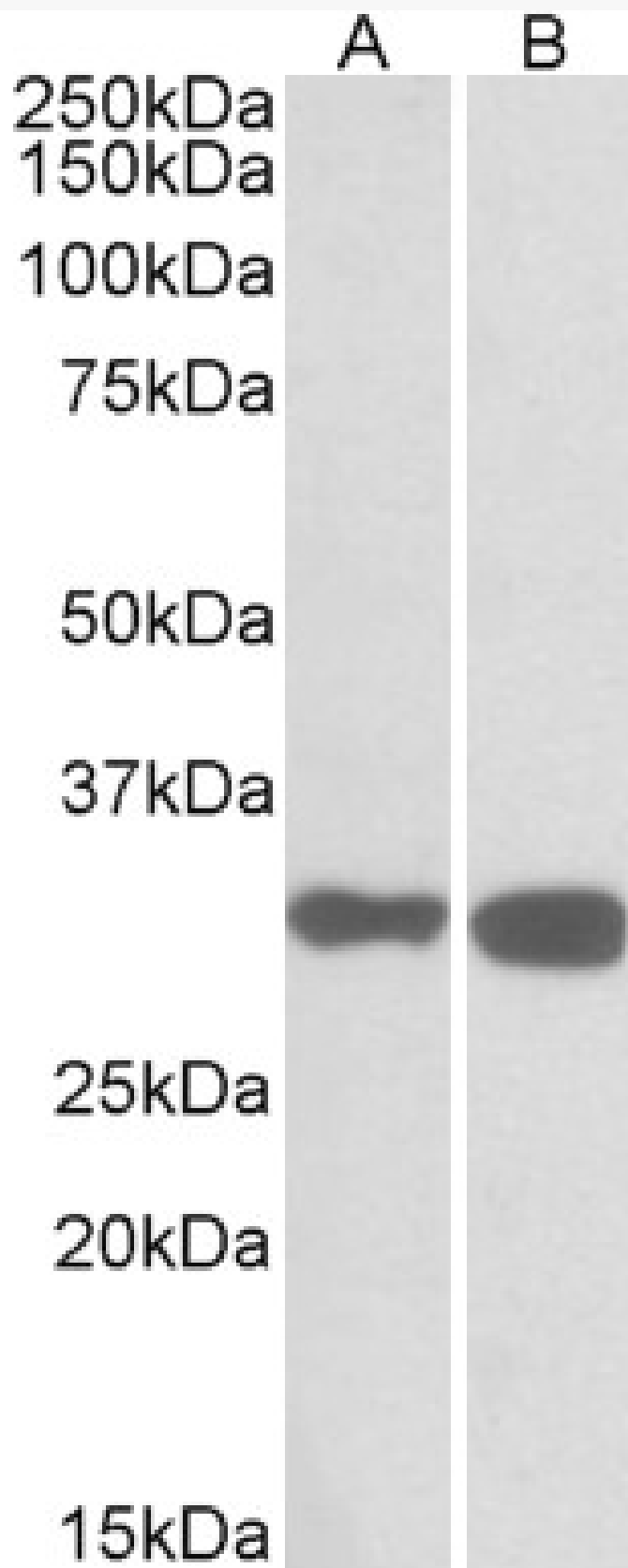


# GOAT ANTI-PDXP ANTIBODY

**SKU:** EB10505



## SPECIFICATIONS

**Formulation** Supplied at 0.5 mg/ml in Tris saline, 0.02% sodium azide, pH7.3 with 0.5% bovine serum albumin.

**Unit Size** 100 µg

**Storage Instructions** Aliquot and store at -20°C. Minimize freezing and thawing.

**Synonym / Alias Names** PDXP|pyridoxal phosphate phosphatase|pyridoxal phosphatase|pyridoxal (pyridoxine, vitamin B6) phosphatase|PLP|FLJ32703|dJ37E16.5|CIN|chronophin

**Accession ID** NP\_064711.1

**Blocking Peptide** EBP10505

**Immunogen** Peptide with sequence C-QHDLVPHYVES, from the C Terminus of the protein sequence according to NP\_064711.1.

**Peptide Sequence** C-QHDLVPHYVES

**Purification Method** Purified from goat serum by ammonium sulphate precipitation followed by antigen affinity chromatography using the immunizing peptide.

**Shipping Instructions** Refrigerated

**Predicted Species** Human, Mouse, Rat, Cow

**Reactive Species** Human, Mouse, Rat

**Human Gene ID** 57026

**Mouse Gene ID** 57028

**Rat Gene ID** 727679

**Product Grade** [https://prod-vector-labs-pimcore-assets.s3.us-east-1.amazonaws.com/assets/products/image/elite\\_medium.png](https://prod-vector-labs-pimcore-assets.s3.us-east-1.amazonaws.com/assets/products/image/elite_medium.png)

**IHC Results** Paraffin embedded Human Tonsil. Recommended concentration: 5µg/ml.

**ELISA Detection Limit** Antibody detection limit dilution 1:64000.

**Western Blot** Approx 32kDa band observed in Human and Rat Heart lysates and in Mouse and Rat Brain lysates (calculated MW of 31.7kDa according to NP\_064711.1). Recommended concentration: 0.1-0.3µg/ml. Primary incubation was 1 hour.

**Application Type** Pep-ELISA, WB, IHC

## DOCUMENTS

- [Data Sheet](#)

## GALLERY IMAGES

