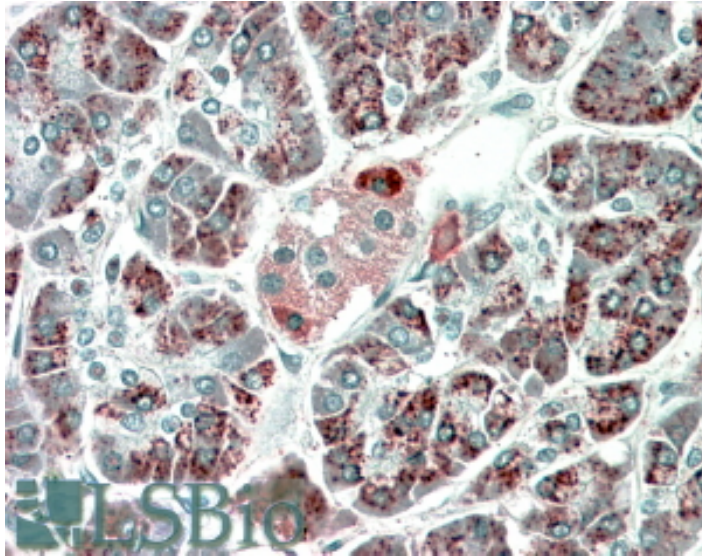




# GOAT ANTI-PEBP4 ANTIBODY

SKU: EB09427



## SPECIFICATIONS

<b>Formulation</b>	Supplied at 0.5 mg/ml in Tris saline, 0.02% sodium azide, pH7.3 with 0.5% bovine serum albumin.
<b>Unit Size</b>	100 µg
<b>Storage Instructions</b>	Aliquot and store at -20°C. Minimize freezing and thawing.
<b>Synonym / Alias Names</b>	cousin-of-RKIP 1 protein PRO4408 MGC22776 GWTM1933 CORK1 CORK-1 phosphatidylethanolamine-binding protein 4 PEBP4
<b>Accession ID</b>	NP_659399.2
<b>Blocking Peptide</b>	EBP09427
<b>Immunogen</b>	Peptide with sequence C-RERASEPKHKNQAE, from the C Terminus of the protein sequence according to NP_659399.2.
<b>Peptide Sequence</b>	C-RERASEPKHKNQAE
<b>Purification Method</b>	Purified from goat serum by ammonium sulphate precipitation followed by antigen affinity chromatography using the immunizing peptide.
<b>Shipping Instructions</b>	Refrigerated



<b>Predicted Species</b>	Human
<b>Reactive Species</b>	Human
<b>Human Gene ID</b>	157310
<b>Product Grade</b>	<a href="https://prod-vector-labs-pimcore-assets.s3.us-east-1.amazonaws.com/assets/products/image/elite_medium.png">https://prod-vector-labs-pimcore-assets.s3.us-east-1.amazonaws.com/assets/products/image/elite_medium.png</a>
<b>IHC Results</b>	In paraffin embedded Human Pancreas shows staining consistent with lysosomes. Recommended concentration, 5-10µg/ml.
<b>ELISA Detection Limit</b>	Antibody detection limit dilution 1:4000.
<b>Western Blot</b>	Approx 26kDa band observed in Human Heart lysates (calculated MW of 25.7kDa according to NP_659399.2). Recommended concentration: 1-3µg/ml. An additional band of unknown identity was also consistently observed at 30kDa. This band was successfully blocked by incubation with the immunizing peptide. We would appreciate any feedback from people in the field - have any such results been reported with other antibodies/lysates? Have any further splice variants/modified forms been reported?
<b>Application Type</b>	Pep-ELISA, WB, IHC

## DOCUMENTS

- [Data Sheet](#)

## GALLERY IMAGES

