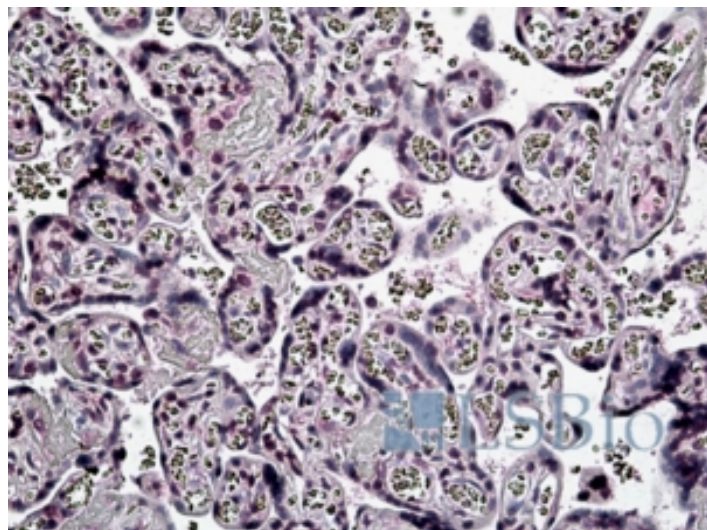


GOAT ANTI-PER2 ANTIBODY

SKU: EB06851



SPECIFICATIONS

Formulation Supplied at 0.5 mg/ml in Tris saline, 0.02% sodium azide, pH7.3 with 0.5% bovine serum albumin.

Unit Size 100 µg

Storage Instructions Aliquot and store at -20°C. Minimize freezing and thawing.

Synonym /

Alias Names KIAA0347|FASPS|period circadian protein 2|period, Drosophila, homolog of, 2|Period homolog 2

Accession ID NP_073728.1

Blocking Peptide EBP06851

Immunogen Peptide with sequence C-DQQPKAPLTRDE, from the internal region of the protein sequence according to NP_073728.1.

Product Comments This antibody is expected to recognise isoform 1 only (NP_073728)

Peptide Sequence C-DQQPKAPLTRDE

Purification Method Purified from goat serum by ammonium sulphate precipitation followed by antigen affinity chromatography using the immunizing peptide.

Shipping Instructions	Refrigerated
Predicted Species	Human
Reactive Species	Human
Human Gene ID	8864
Product Grade	https://prod-vector-labs-pimcore-assets.s3.us-east-1.amazonaws.com/assets/products/image/elite_medium.png
IHC Results	In paraffin embedded Human Placenta shows mainly nuclear staining throughout. Recommended concentration, 3-6µg/ml.
ELISA	
Detection Limit	Antibody detection limit dilution 1:4000.
Application Type	Pep-ELISA, IHC

DOCUMENTS

- [Data Sheet](#)

GALLERY IMAGES

