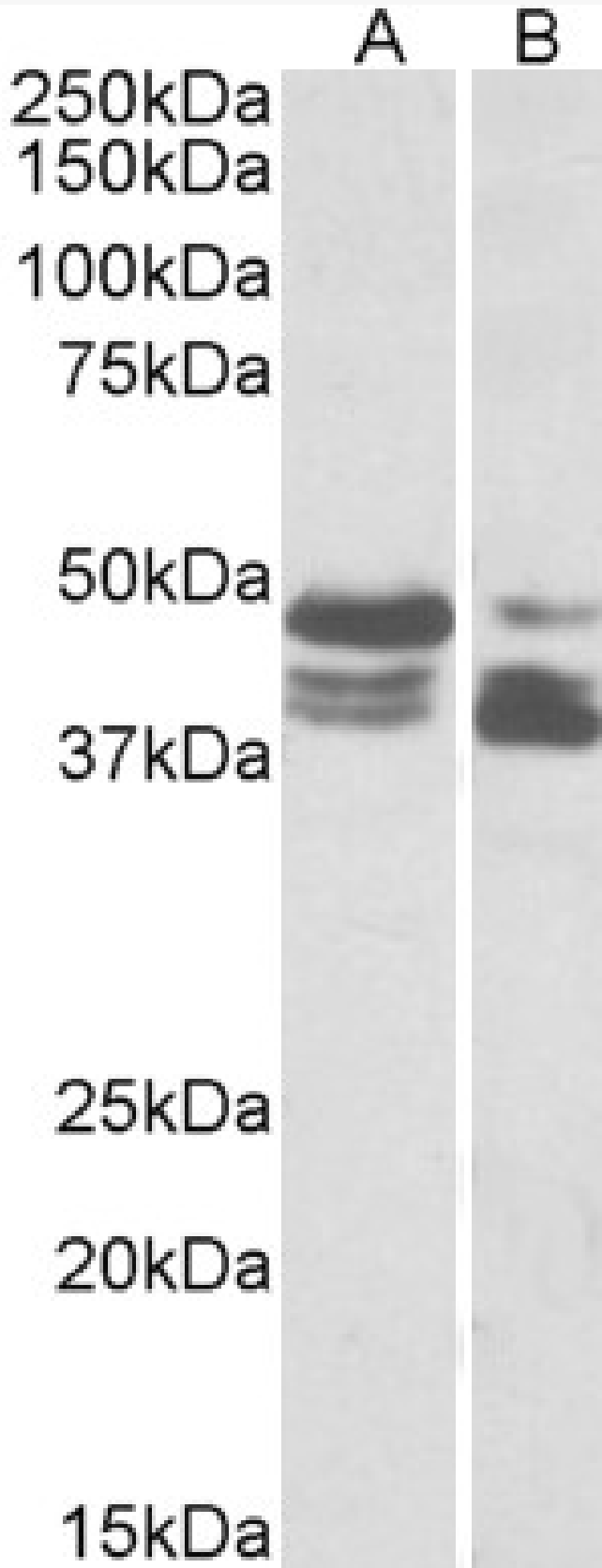


# GOAT ANTI-PERILIPIN 3 / TIP47 (AA154-167) ANTIBODY

SKU: EB11885



## SPECIFICATIONS

<b>Formulation</b>	Supplied at 0.5 mg/ml in Tris saline, 0.02% sodium azide, pH7.3 with 0.5% bovine serum albumin.
<b>Unit Size</b>	100 µg
<b>Storage Instructions</b>	Aliquot and store at -20°C. Minimize freezing and thawing.
<b>Synonym / Alias Names</b>	PLIN3  perilipin 3  M6PRBP1  MGC11117  MGC2012  PP17  TIP47  47 kDa MPR-binding protein  cargo selection protein TIP47  mannose-6-phosphate receptor-binding protein 1  perilipin-3  placental protein 17  tail-interacting protein, 47 kD
<b>Accession ID</b>	NP_005808.3; NP_001157661.1; NP_001157666.1
<b>Blocking Peptide</b>	EBP11885
<b>Immunogen</b>	Peptide with sequence C-TRGAVQSGVDKTKS, from the internal region of the protein sequence according to NP_005808.3; NP_001157661.1; NP_001157666.1.
<b>Product Comments</b>	This antibody is expected to recognize all reported isoforms (NP_005808.3; NP_001157661.1; NP_001157666.1).
<b>Peptide Sequence</b>	C-TRGAVQSGVDKTKS
<b>Purification Method</b>	Purified from goat serum by ammonium sulphate precipitation followed by antigen affinity chromatography using the immunizing peptide.
<b>Shipping Instructions</b>	Refrigerated
<b>Predicted Species</b>	Human
<b>Reactive Species</b>	Human
<b>Human Gene ID</b>	10226
<b>Product Grade</b>	<a href="https://prod-vector-labs-pimcore-assets.s3.us-east-1.amazonaws.com/assets/products/image/elite_medium.png">https://prod-vector-labs-pimcore-assets.s3.us-east-1.amazonaws.com/assets/products/image/elite_medium.png</a>
<b>ELISA Detection Limit</b>	Antibody detection limit dilution 1:128000.
<b>Western Blot</b>	Approx 48kDa+45kDa double bands observed in lysates of cell line HeLa and of Human Colon cancer (calculated MW of 47.1kDa according to NP_NP_005808.3, 46.9kDa according to NP_001157661.1 and 45.8kDa according to NP_001157666.1). The observed bands represent the three different isoforms. Please note the difference in band pattern intensities between HeLa and Colon cancer lysates. Recommended concentration: 0.03-0.1µg/ml.
<b>Application Type</b>	Pep-ELISA, WB

## DOCUMENTS

- [Data Sheet](#)

## GALLERY IMAGES

