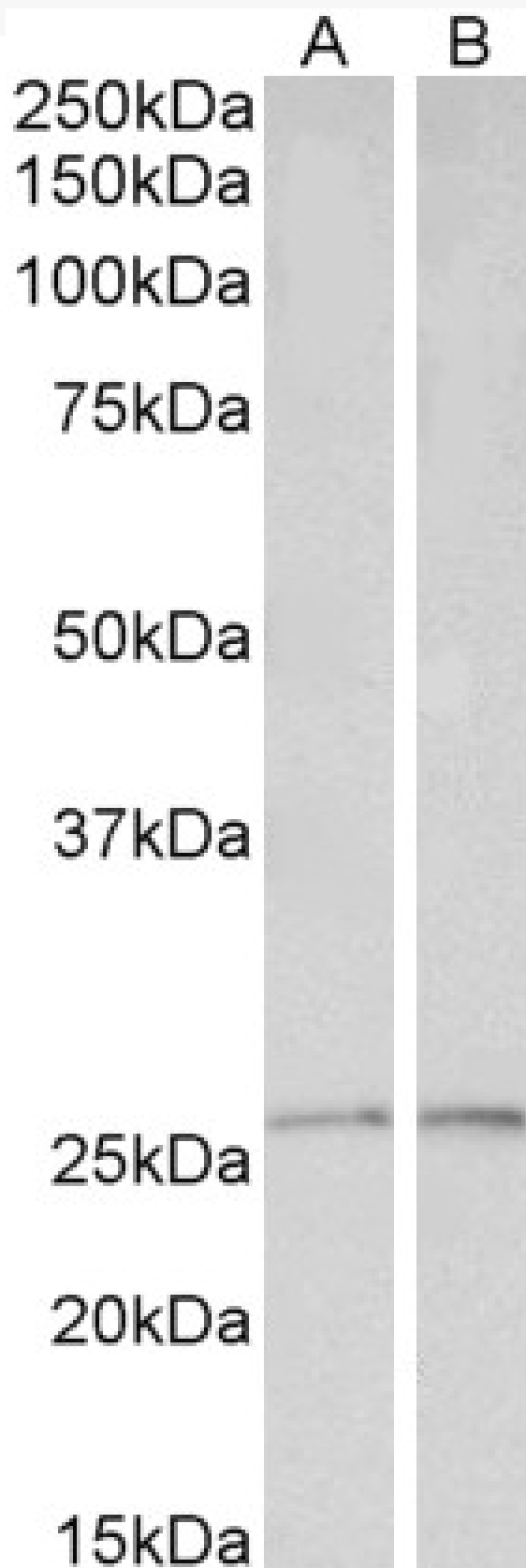


GOAT ANTI-PEROXIREDOXIN 6 ANTIBODY

SKU: EB12402



SPECIFICATIONS

Formulation	Supplied at 0.5 mg/ml in Tris saline, 0.02% sodium azide, pH7.3 with 0.5% bovine serum albumin.
Unit Size	100 µg
Storage Instructions	Aliquot and store at -20°C. Minimize freezing and thawing.
Synonym / Alias Names	peroxiredoxin-6 non-selenium glutathione peroxidase liver 2D page spot 40 antioxidant protein 2 acidic calcium-independent phospholipase A2 24 kDa protein 1-Cys peroxiredoxin 1-Cys PRX p29 aiPLA2 PRX NSGPx AOP2 1-Cys peroxiredoxin 6 PRDX6
Accession ID	NP_004896.1
Blocking Peptide	EBP12402
Immunogen	Peptide with sequence C-EANTTVGRIRFHD, from the internal region (near N terminus) of the protein sequence according to NP_004896.1.
Peptide Sequence	C-EANTTVGRIRFHD
Purification Method	Purified from goat serum by ammonium sulphate precipitation followed by antigen affinity chromatography using the immunizing peptide.
Shipping Instructions	Refrigerated
Predicted Species	Human
Reactive Species	Human, Mouse
Human Gene ID	9588
Product Grade	https://prod-vector-labs-pimcore-assets.s3.us-east-1.amazonaws.com/assets/products/image/elite_medium.png
IHC Results	Paraffin embedded Human Prostate. Recommended concentration: 5µg/ml.
ELISA Detection Limit	Antibody detection limit dilution 1:128000.
Western Blot	Approx 26kDa band observed in Human Heart and in Human and Mouse Liver lysates (calculated MW of 25.0kDa according to NP_004896.1). Recommended concentration: 0.1-0.3µg/ml.
Application Type	Pep-ELISA, WB, IHC

DOCUMENTS

- [Data Sheet](#)

GALLERY IMAGES

