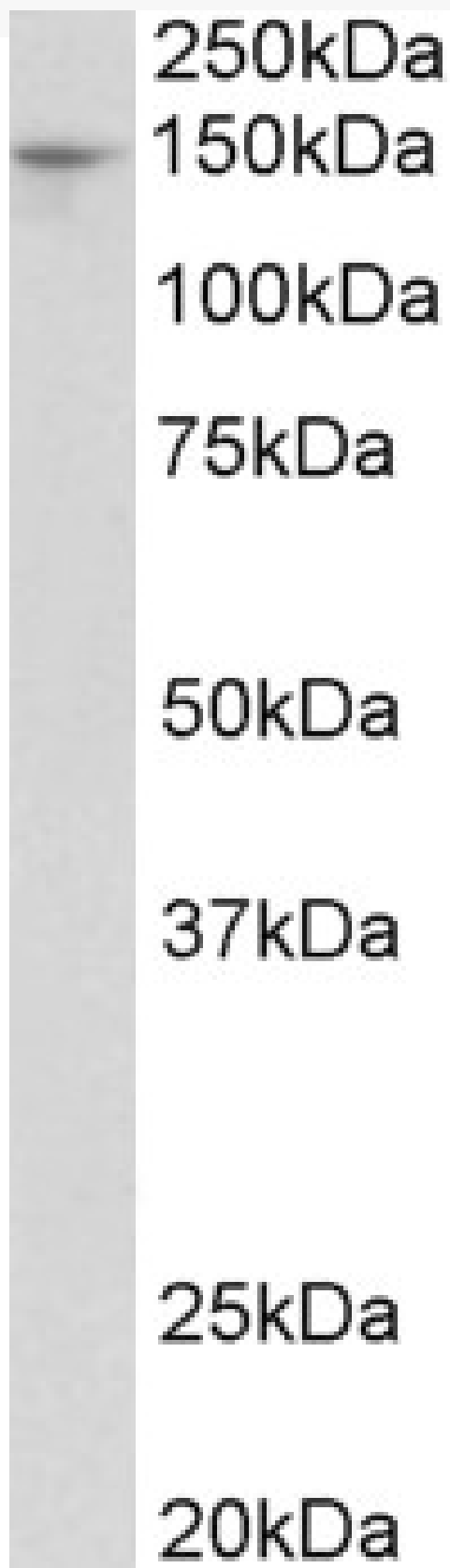


# GOAT ANTI-PEX1 (MOUSE) ANTIBODY

**SKU:** EB10154



## SPECIFICATIONS

**Formulation** Supplied at 0.5 mg/ml in Tris saline, 0.02% sodium azide, pH7.3 with 0.5% bovine serum albumin.

**Unit Size** 100 µg

**Storage Instructions** Aliquot and store at -20°C. Minimize freezing and thawing.

**Synonym / Alias Names** Pex1|ZWS1|peroxisome biogenesis disorder protein 1|peroxisomal biogenesis factor 1|peroxin1|MGC102188|E330005K07Rik|5430414H02Rik

**Accession ID** NP\_082053.1

**Blocking Peptide** EBP10154

**Immunogen** Peptide with sequence C-QAKESTFPKEGDAH, from the internal region of the protein sequence according to NP\_082053.1.

**Peptide Sequence** C-QAKESTFPKEGDAH

**Purification Method** Purified from goat serum by ammonium sulphate precipitation followed by antigen affinity chromatography using the immunizing peptide.

**Shipping Instructions** Refrigerated

**Predicted Species** Human, Mouse, Rat, Dog, Cow

**Reactive Species** Mouse, Rat

**Mouse Gene ID** 71382

**Rat Gene ID** 500006

**Product Grade** [https://prod-vector-labs-pimcore-assets.s3.us-east-1.amazonaws.com/assets/products/image/elite\\_medium.png](https://prod-vector-labs-pimcore-assets.s3.us-east-1.amazonaws.com/assets/products/image/elite_medium.png)

**ELISA Detection Limit** Antibody detection limit dilution 1:32000.

**Western Blot** Approx 150kDa band observed in Mouse and Rat Liver lysates (calculated MW of 137kDa according to NP\_082053.1). Recommended concentration: 0.3-1µg/ml.

**Application Type** Pep-ELISA, WB

## DOCUMENTS

- [Data Sheet](#)

## GALLERY IMAGES

