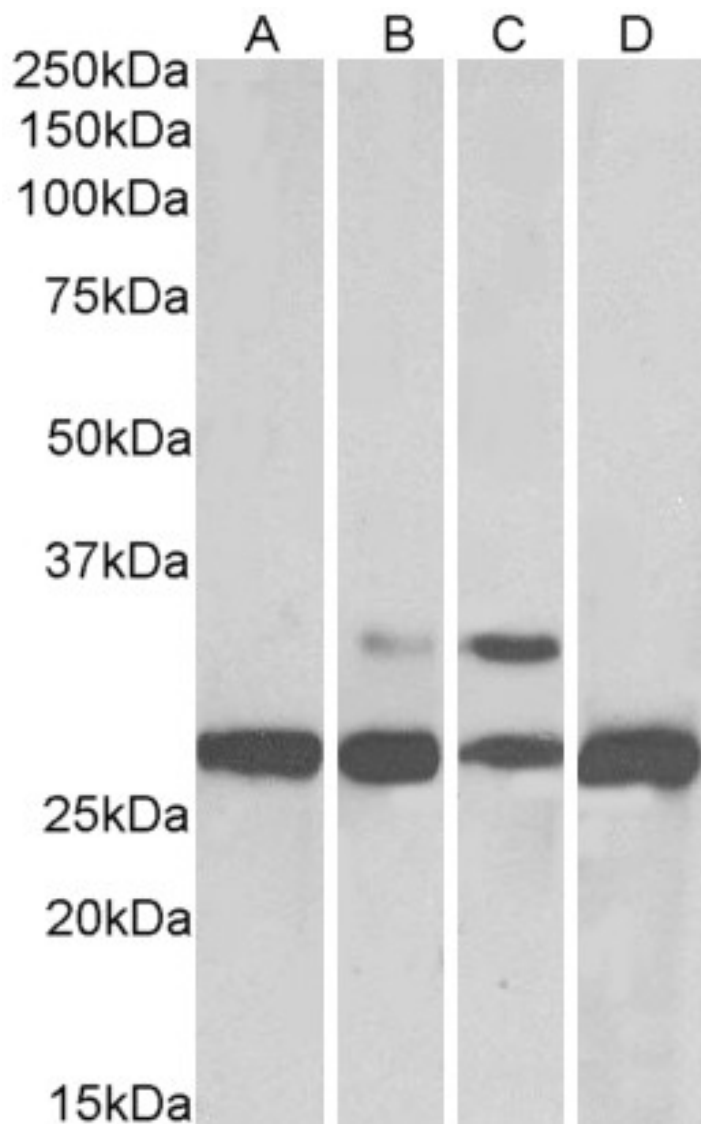


## GOAT ANTI-PGAM1 / PGAM2 / PGAM4 ANTIBODY

**SKU:** EB05028



## SPECIFICATIONS

**Formulation** Supplied at 0.5 mg/ml in Tris saline, 0.02% sodium azide, pH7.3 with 0.5% bovine serum albumin.

**Unit Size** 100 µg

<b>Storage Instructions</b>	Aliquot and store at -20°C. Minimize freezing and thawing.
<b>Synonym / Alias Names</b>	OTTHUMP00000063546 BPG-dependent PGAM 2 PGAM-M OTTHUMP00000020190 BPG-dependent PGAM 1 bisphosphoglycerate mutase 4 bisphosphoglycerate mutase 2 bisphosphoglycerate mutase 1 phosphoglycerate mutase processed protein phosphoglycerate mutase family 4 phosphoglycerate mutase family 3 dJ1000K24.1 PGAM-B phosphoglycerate mutase family member 4 PGAM3 Phosphoglycerate mutase, muscle form PGAMM MGC88743 phosphoglycerate mutase 2 (muscle) Phosphoglycerate mutase A, nonmuscle form OTTHUMP00000059414 RP11-452K12.8 PGAMA phosphoglycerate mutase 1 (brain) PGAM2 PGAM1
<b>Accession ID</b>	NP_002620.1; NP_000281.2; NP_001025062.1
<b>Blocking Peptide</b>	EBP05028
<b>Immunogen</b>	Peptide with sequence C-KAMEAVAAQGKAKK, from the C Terminus of the protein sequence according to NP_002620.1; NP_000281.2; NP_001025062.1.
<b>Product Comments</b>	Please note this antibody is expected to recognize the products of 3 highly similar genes.
<b>Peptide Sequence</b>	C-KAMEAVAAQGKAKK
<b>Purification Method</b>	Purified from goat serum by ammonium sulphate precipitation followed by antigen affinity chromatography using the immunizing peptide.
<b>Shipping Instructions</b>	Refrigerated
<b>Predicted Species</b>	Human, Mouse, Rat, Dog, Pig, Cow
<b>Reactive Species</b>	Human, Mouse, Rat, Pig
<b>Human Gene ID</b>	5223, 5224
<b>Product Grade</b>	<a href="https://prod-vector-labs-pimcore-assets.s3.us-east-1.amazonaws.com/assets/products/image/elite_medium.png">https://prod-vector-labs-pimcore-assets.s3.us-east-1.amazonaws.com/assets/products/image/elite_medium.png</a>
<b>ELISA Detection Limit</b>	Antibody detection limit dilution 1:128000.
<b>Western Blot</b>	Approx 28kDa band observed in Human, Mouse, Rat and Pig Liver lysates (calculated MW of 28.8kDa according to NP_002620.1; NP_000281.2 and of NP_001025062.1). The additional 30kDa band observed in the rodent lysates likely represent the acetylated form. Recommended concentration: 0.05-0.15µg/ml. Primary incubation was 1 hour.
<b>Application Type</b>	Pep-ELISA, WB

## SELECTED REFERENCES

[{"pmid": 30377371, "intro": "**This antibody (previous batch) has been successfully used in the following paper:**", "title": "A high-throughput pipeline for validation of antibodies", "author": "Krzysztof Sikorski, Adi Mehta, Marit Inngjerdigen, Flourina Thakor, Simon Kling, Tomas Kalina, Tuula A. Nyman, Maria Ekman Stensland, Wei Zhou, Gustavo A. De Souza, Lars Holden, Jan Stuchly, Markus Templin and Fridtjof Lund-Johansen", "journal": "Nat Methods. 2018"}]

Nov;15(11):909-912"}]

## DOCUMENTS

- [Data Sheet](#)

## GALLERY IMAGES

