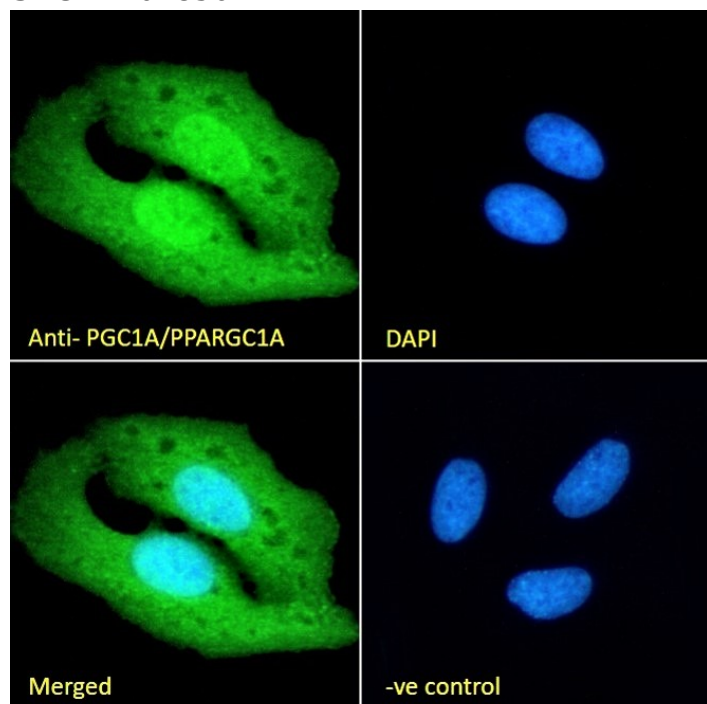


GOAT ANTI-PGC1A/PPARGC1A ANTIBODY

SKU: EB07856



SPECIFICATIONS

Formulation Supplied at 0.5 mg/ml in Tris saline, 0.02% sodium azide, pH7.3 with 0.5% bovine serum albumin.

Unit Size 100 µg

Storage Instructions Aliquot and store at -20°C. Minimize freezing and thawing.

Synonym / Alias Names peroxisome proliferative activated receptor, gamma, coactivator 1, alpha|gamma, coactivator 1|peroxisome proliferative activated receptor|ligand effect modulator-6|PPAR gamma coactivator-1|PPAR gamma coactivator variant form|PPARGC1|PGC1|PGC-1v|PGC-1(alpha)|LEM6|peroxisome proliferator-activated receptor gamma, coactivator 1 alpha|PPARGC1A|PGC1A

Usage Summary **Immunofluorescence:** Strong expression of the protein seen in the nucleus and cytoplasm of U2OS and HeLa cells. Recommended concentration: 10µg/ml. **Flow Cytometry:** Flow cytometric analysis of HeLa cells. Recommended concentration: 10ug/ml.

Accession ID NP_037393.1; NP_001317680.1; NP_001317681.1; NP_001317682.1; NP_001341756.1;

Blocking Peptide EBP07856

Immunogen	Peptide with sequence C-DGLFDDSEDESDK, from the internal region of the protein sequence according to NP_037393.1; NP_001317680.1; NP_001317681.1; NP_001317682.1; NP_001341756.1;.
Peptide Sequence	C-DGLFDDSEDESDK
Purification Method	Purified from goat serum by ammonium sulphate precipitation followed by antigen affinity chromatography using the immunizing peptide.
Shipping Instructions	Refrigerated
Predicted Species	Human, Mouse, Rat, Dog, Cow
Reactive Species	Human
Human Gene ID	10891
Mouse Gene ID	19017
Rat Gene ID	83516
Product Grade	https://prod-vector-labs-pimcore-assets.s3.us-east-1.amazonaws.com/assets/products/image/elite_plus_medium.png
IHC Results	Paraffin embedded Human Kidney. Recommended concentration: 6-8µg/ml.
ELISA Detection Limit	Antibody detection limit dilution 1:2000.
Western Blot	Preliminary testing showed a band at approx 90kDa in nuclear lysates of cell lines A431 and HEK293 after 0.3-1µg/ml antibody staining (calculated MW of 91.0kDa according to Human NP_037393.1). Primary incubation 1 hour at room temperature.
Application Type	Pep-ELISA, IF, IHC, FC

DOCUMENTS

- [Data Sheet](#)

GALLERY IMAGES

