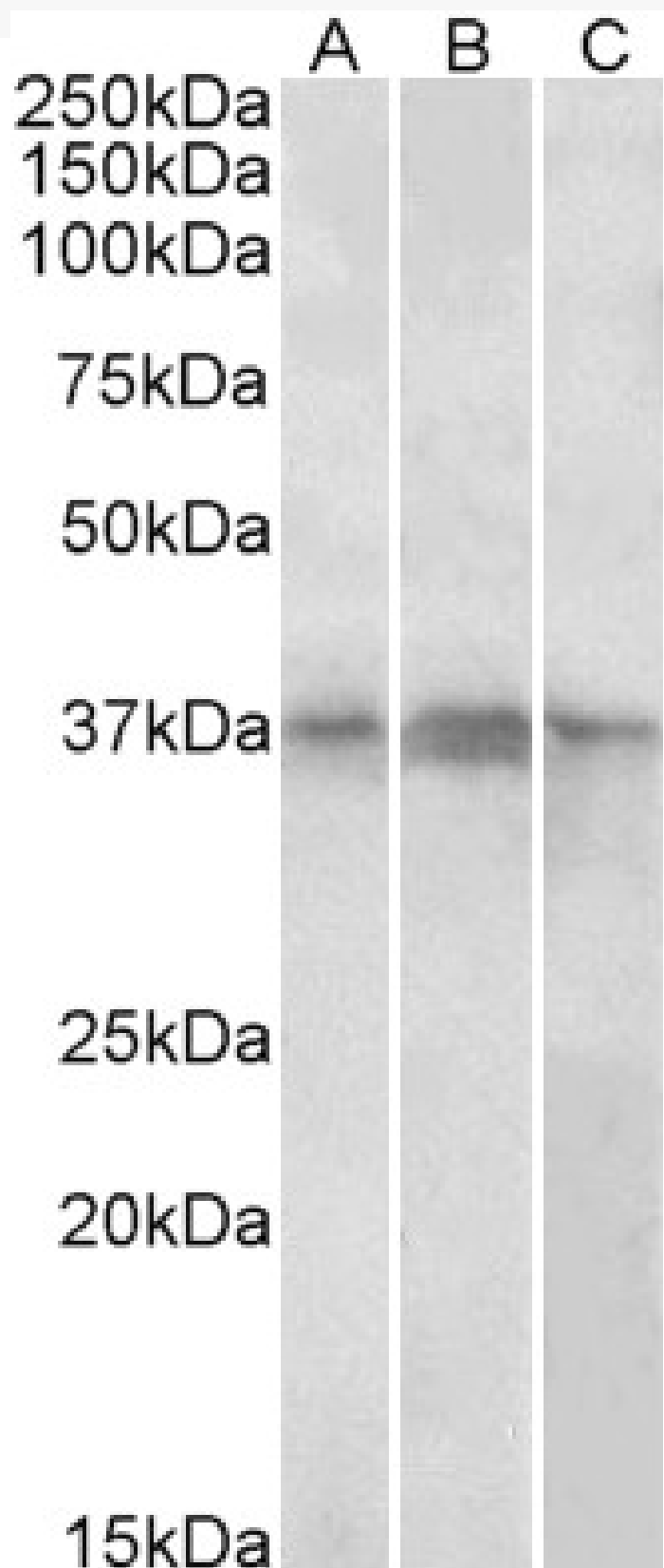


GOAT ANTI-PHF11 ANTIBODY

SKU: EB08585



SPECIFICATIONS

Formulation	Supplied at 0.5 mg/ml in Tris saline, 0.02% sodium azide, pH7.3 with 0.5% bovine serum albumin.
Unit Size	100 µg
Storage Instructions	Aliquot and store at -20°C. Minimize freezing and thawing.
Synonym / Alias Names	PHF11 PHD finger protein 11 APY BCAP IGEL IGER IGHER NY-REN-34 NYREN34 RP11-185C18.3 IgE responsiveness (atopic) NY-REN-34 antigen
Accession ID	NP_001035533.1; NP_001035534.1
Blocking Peptide	EBP08585
Immunogen	Peptide with sequence C-KIHASQQRWQQLKE, from the internal region of the protein sequence according to NP_001035533.1; NP_001035534.1.
Product Comments	This antibody is expected to recognize both reported isoforms (NP_001035533.1; NP_001035534.1).
Peptide Sequence	C-KIHASQQRWQQLKE
Purification Method	Purified from goat serum by ammonium sulphate precipitation followed by antigen affinity chromatography using the immunizing peptide.
Shipping Instructions	Refrigerated
Predicted Species	Human
Reactive Species	Human
Human Gene ID	51131
Product Grade	https://prod-vector-labs-pimcore-assets.s3.us-east-1.amazonaws.com/assets/products/image/elite_medium.png
ELISA Detection Limit	Antibody detection limit dilution 1:16000.
Western Blot	Approx 37kDa band observed in nuclear lysates of cell lines Daudi, Jurkat and Jurkat (calculated MW of 37.6kDa according to NP_001035533.1). Recommended concentration: 1-3µg/ml.
Application Type	Pep-ELISA, WB

DOCUMENTS

- [Data Sheet](#)

GALLERY IMAGES

