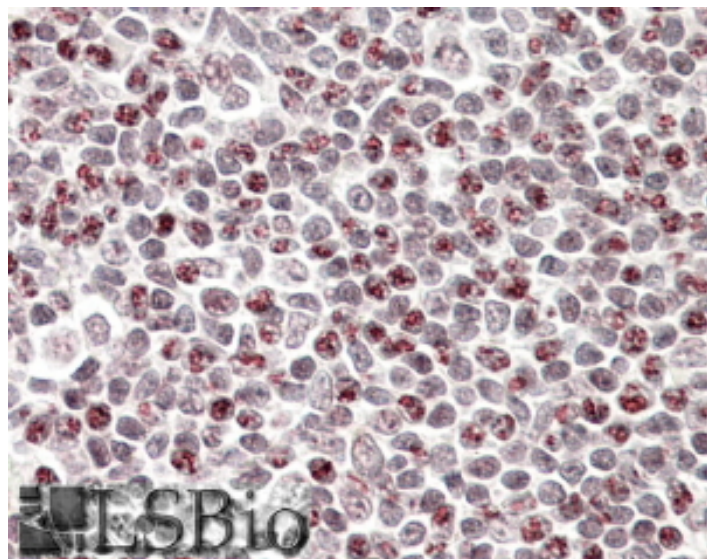


# GOAT ANTI-PHORBOLIN 1 / APOBEC3A ANTIBODY

**SKU:** EB08268



## SPECIFICATIONS

<b>Formulation</b>	Supplied at 0.5 mg/ml in Tris saline, 0.02% sodium azide, pH7.3 with 0.5% bovine serum albumin.
<b>Unit Size</b>	100 µg
<b>Storage Instructions</b>	Aliquot and store at -20°C. Minimize freezing and thawing.
<b>Synonym / Alias Names</b>	phorbolin 1 bK150C2.1 PHRBN ARP3 apolipoprotein B mRNA editing enzyme, catalytic polypeptide-like 3A APOBEC3A
<b>Usage Summary</b>	<strong>Immunofluorescence:</strong> Strong expression of the protein seen in the nuclei of A431 and A549 cells. Recommended concentration: 10µg/ml. <strong>Flow Cytometry:</strong> Flow cytometric analysis of Jurkat cells. Recommended concentration: 10ug/ml.
<b>Accession ID</b>	NP_663745.1
<b>Blocking Peptide</b>	EBP08268
<b>Immunogen</b>	Peptide with sequence C-TSNFNNGIGRHKTY, from the internal region of the protein sequence according to NP_663745.1.
<b>Peptide Sequence</b>	C-TSNFNNGIGRHKTY
<b>Purification Method</b>	Purified from goat serum by ammonium sulphate precipitation followed by antigen affinity chromatography using the immunizing peptide.

<b>Shipping Instructions</b>	Refrigerated
<b>Predicted Species</b>	Human
<b>Reactive Species</b>	Human
<b>Human Gene ID</b>	200315
<b>Product Grade</b>	<a href="https://prod-vector-labs-pimcore-assets.s3.us-east-1.amazonaws.com/assets/products/image/elite_plus_medium.png">https://prod-vector-labs-pimcore-assets.s3.us-east-1.amazonaws.com/assets/products/image/elite_plus_medium.png</a>
<b>IHC Results</b>	In paraffin embedded Human Tonsil shows staining of distinct parts of the nucleus in lymphoid cells. Recommended concentration: 3-6µg/ml.
<b>ELISA</b>	
<b>Detection Limit</b>	Antibody detection limit dilution 1:8000.
<b>Western Blot</b>	Approx. 26-28kDa band observed in Human Spleen, Tonsil and Peripheral Blood Monocytes (PBM) lysates (calculated MW of 23.0kDa according to Human NP_663745.1). This molecular weight is routinely observed by other sources. Recommended concentration: 0.1-1ug/ml. Primary incubation 1 hour at room temperature.
<b>Application Type</b>	Pep-ELISA, WB, IF, FC, IHC

## DOCUMENTS

- [Data Sheet](#)

## GALLERY IMAGES

