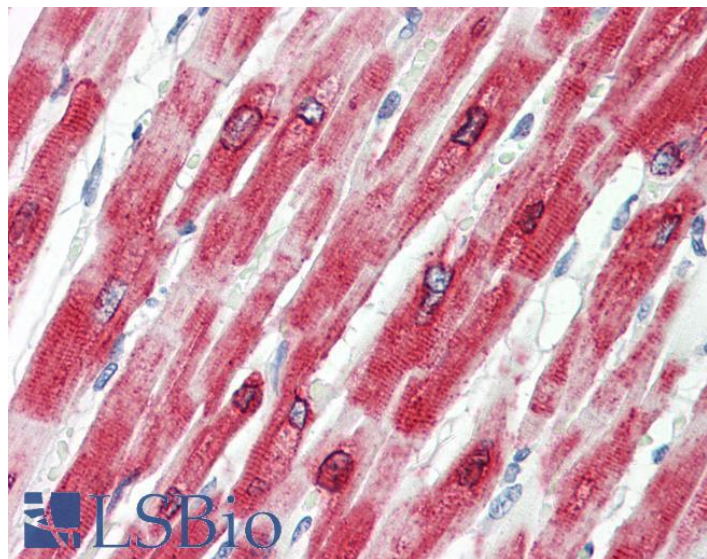


GOAT ANTI-PHOSPHOLAMBAN / PLN ANTIBODY

SKU: EB10221



SPECIFICATIONS

Formulation Supplied at 0.5 mg/ml in Tris saline, 0.02% sodium azide, pH7.3 with 0.5% bovine serum albumin.

Unit Size 100 µg

Storage Instructions Aliquot and store at -20°C. Minimize freezing and thawing.

Synonym /

Alias Names PLN|PLB|phospholamban|CMD1P|cardiac phospholamban

Accession ID NP_002658.1

Blocking Peptide EBP10221

Immunogen Peptide with sequence KVQYLTRSAIRR-C, from the N Terminus of the protein sequence according to NP_002658.1.

Peptide Sequence KVQYLTRSAIRR-C

Purification Method Purified from goat serum by ammonium sulphate precipitation followed by antigen affinity chromatography using the immunizing peptide.

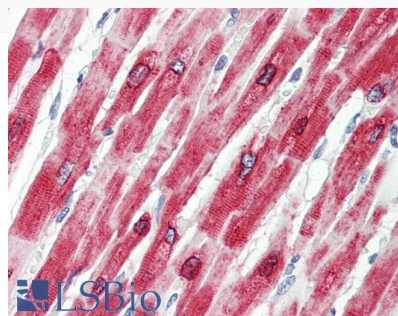
Shipping Instructions Refrigerated

Predicted Species	Human, Rat, Pig, Cow
Reactive Species	Human, Rat
Human Gene ID	5350
Rat Gene ID	64672
Product Grade	https://prod-vector-labs-pimcore-assets.s3.us-east-1.amazonaws.com/assets/products/image/elite_medium.png
IHC Results	Paraffin embedded Human Heart. Recommended concentration: 3.75µg/ml.
ELISA	
Detection Limit	Antibody detection limit dilution 1:8000.
Western Blot	Approx 13kDa band observed in Human and Rat Heart lysates (calculated MW of 6.11kDa according to NP_002658.1). Recommended concentration: 0.01-0.03µg/ml. Primary incubation was 1 hour.
Application Type	Pep-ELISA, WB, IHC

DOCUMENTS

- [Data Sheet](#)

GALLERY IMAGES



250kDa

150kDa

100kDa

75kDa

50kDa

37kDa

25kDa

20kDa

15kDa

10kDa