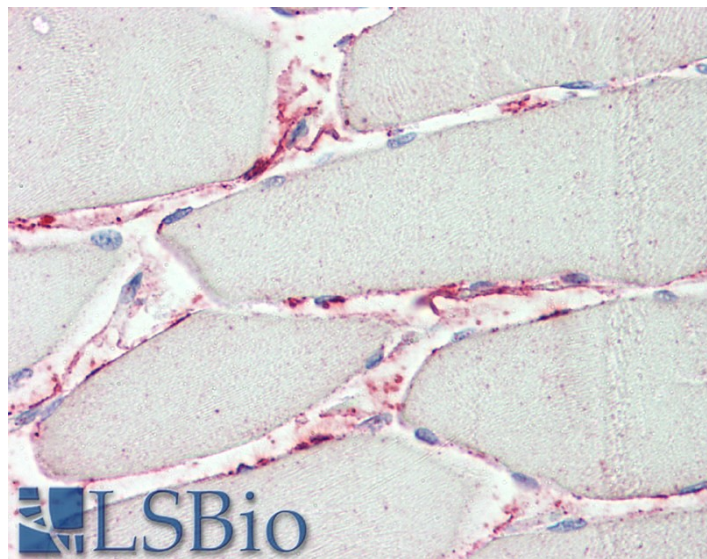


GOAT ANTI-PI15 (AA128-141) ANTIBODY

SKU: EB11365



SPECIFICATIONS

Formulation	Supplied at 0.5 mg/ml in Tris saline, 0.02% sodium azide, pH7.3 with 0.5% bovine serum albumin.
Unit Size	100 µg
Storage Instructions	Aliquot and store at -20°C. Minimize freezing and thawing.
Synonym / Alias Names	PI15 sugarCrisp protease inhibitor 15 PI-15 peptidase inhibitor 15 P25TI P24TI DKFZp686F0366 cysteine-rich secretory protein 8 CRISP-8 CRISP8 25 kDa trypsin inhibitor
Accession ID	NP_056970.1
Blocking Peptide	EBP11365
Immunogen	Peptide with sequence C-RTGRYRSILQLVKP, from the internal region of the protein sequence according to NP_056970.1.
Peptide Sequence	C-RTGRYRSILQLVKP
Purification Method	Purified from goat serum by ammonium sulphate precipitation followed by antigen affinity chromatography using the immunizing peptide.
Shipping Instructions	Refrigerated

Predicted Species	Human, Mouse, Rat, Dog, Pig, Cow
Reactive Species	Human
Human Gene ID	51050
Mouse Gene ID	94227
Rat Gene ID	301489
Product Grade	https://prod-vector-labs-pimcore-assets.s3.us-east-1.amazonaws.com/assets/products/image/elite_medium.png
IHC Results	Paraffin embedded Human Skeletal Muscle. Recommended concentration: 5µg/ml.
ELISA	
Detection Limit	Antibody detection limit dilution 1:1000.
Western Blot	Approx 33kDa band observed in lysates of cell line HeLa (calculated MW of 29.1kDa according to NP_056970.1). Recommended concentration: 0.3-1µg/ml. Preliminary testing was unsuccessful on Mouse and Rat Brain for this particular batch.
Application Type	Pep-ELISA, WB, IHC

DOCUMENTS

- [Data Sheet](#)

GALLERY IMAGES

