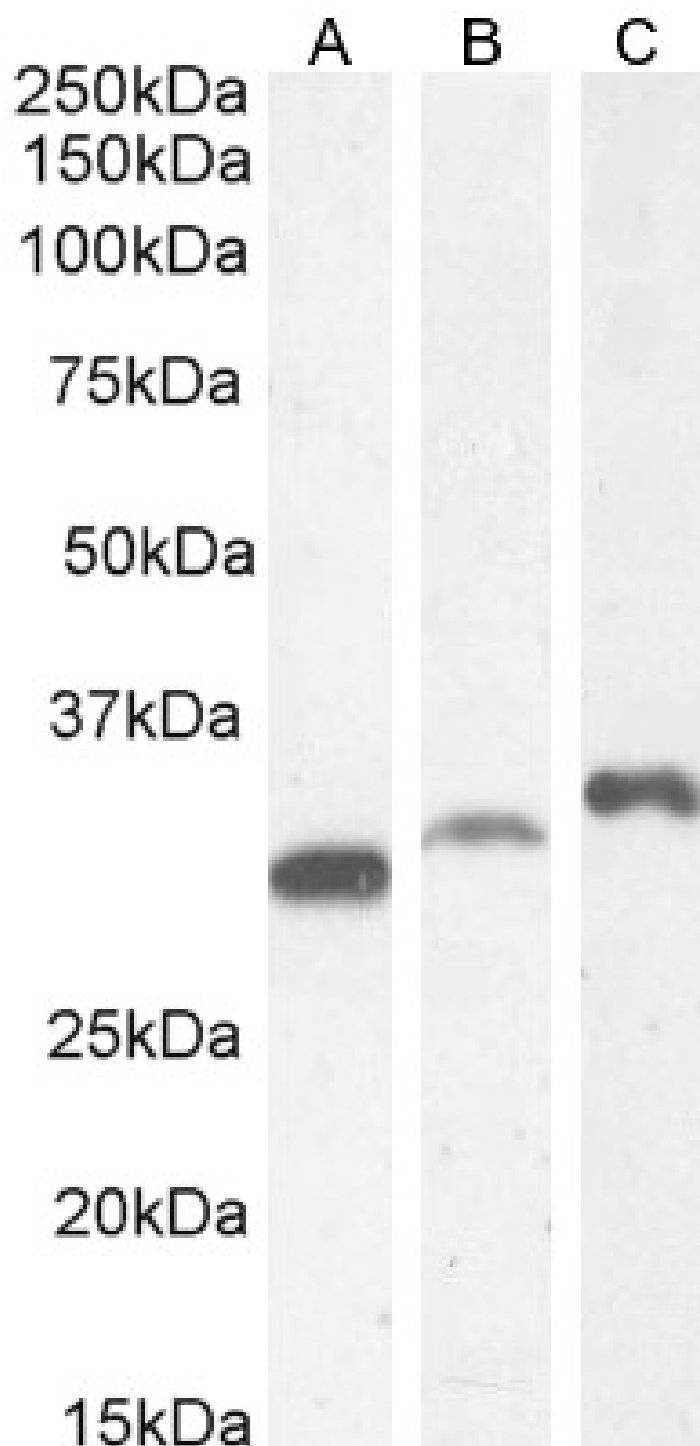


GOAT ANTI-PI31 / PSMF1 (ISOFORM 1) ANTIBODY

SKU: EB05845



SPECIFICATIONS

Formulation	Supplied at 0.5 mg/ml in Tris saline, 0.02% sodium azide, pH7.3 with 0.5% bovine serum albumin.
Unit Size	100 µg
Storage Instructions	Aliquot and store at -20°C. Minimize freezing and thawing.
Synonym / Alias Names	proteasome inhibitor subunit 1 proteasome inhibitor hP131 subunit RP4-545L17.1 proteasome (prosome, macropain) inhibitor subunit 1 (PI31) PI31 PSMF1
Usage Summary	Immunofluorescence: Strong expression of the protein seen in the endoplasmic reticulum and cytoplasm of A431 cells. Recommended concentration: 10µg/ml. Flow Cytometry: A customer reported weak staining of A431 cells at 10ug/ml.
Accession ID	NP_006805.2
Blocking Peptide	EBP05845
Immunogen	Peptide with sequence C-DHLPPPGYDDMYL, from the C Terminus of the protein sequence according to NP_006805.2.
Product Comments	This antibody is expected to recognize isoform 1 (NP_006805.2 and NP_848693.2).
Peptide Sequence	C-DHLPPPGYDDMYL
Purification Method	Purified from goat serum by ammonium sulphate precipitation followed by antigen affinity chromatography using the immunizing peptide.
Shipping Instructions	Refrigerated
Predicted Species	Human, Mouse, Rat, Dog, Cow
Reactive Species	Human, Mouse, Rat
Human Gene ID	9491
Mouse Gene ID	228769
Product Grade	https://prod-vector-labs-pimcore-assets.s3.us-east-1.amazonaws.com/assets/products/image/elite_medium.png
ELISA Detection Limit	Antibody detection limit dilution 1:32000.
Western Blot	Approx 30kDa band observed in lysates of cell line HEK293,, approx 30-32kDa in lysates of cell lines K562, NIH3T3, Neuro2a and KNRK, and approx. 35kDa in lysates of cell line LNCaP (calculated MW of 29.8kDa according to Human NP_006805.2 and Rat NP_001094475.1, and 28.7kDa according to Mouse NP_997611.1). Recommended concentration: 0.3-1µg/ml Primary incubation 1 hour at room temperature.

Application Type Pep-ELISA, WB, IF

DOCUMENTS

- [Data Sheet](#)

GALLERY IMAGES

