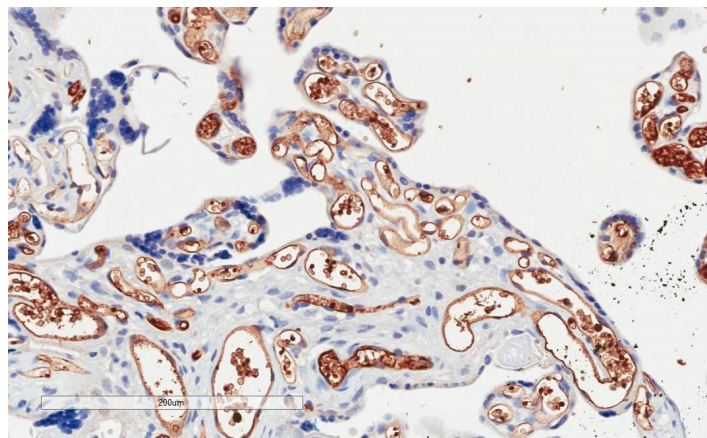


GOAT ANTI-PIK3C2A ANTIBODY

SKU: EB06291



SPECIFICATIONS

Formulation Supplied at 0.5 mg/ml in Tris saline, 0.02% sodium azide, pH7.3 with 0.5% bovine serum albumin.

Unit Size 100 μg

Storage Instructions Aliquot and store at -20°C. Minimize freezing and thawing.

Synonym / Alias Names MGC142218|DKFZp686L193|C2-containing phosphatidylinositol kinase|phosphoinositide-3-kinase, class 2, alpha polypeptide|PI3-K-C2(ALPHA)|PI3K-C2alpha|PI3-K-C2A|CPK|PIK3C2A

Accession ID NP_002636.2

Blocking Peptide EBP06291

Immunogen Peptide with sequence C-TVKWYQLTAATYL, from the C Terminus of the protein sequence according to NP_002636.2.

Peptide Sequence C-TVKWYQLTAATYL

Purification Method Purified from goat serum by ammonium sulphate precipitation followed by antigen affinity chromatography using the immunizing peptide.

Shipping Instructions Refrigerated

Predicted Species Human, Mouse, Dog

Reactive Species Human

Human Gene ID	5286
Mouse Gene ID	18704
Product Grade	https://prod-vector-labs-pimcore-assets.s3.us-east-1.amazonaws.com/assets/products/image/elite_medium.png
IHC Results	In paraffin embedded Human Placenta shows cytoplasm staining of cytotrophoblasts and mesenchymal cells. Recommended concentration: 2-4µg/ml. Paraffin embedded Human Heart. Recommended concentration: 5µg/ml.
ELISA Detection Limit	Antibody detection limit dilution 1:32000.
Western Blot	Preliminary experiments gave no signal but low background in Human Testis and Molt-4 lysates at up to 1µg/ml.
Application Type	Pep-ELISA, IHC

DOCUMENTS

- [Data Sheet](#)

GALLERY IMAGES

