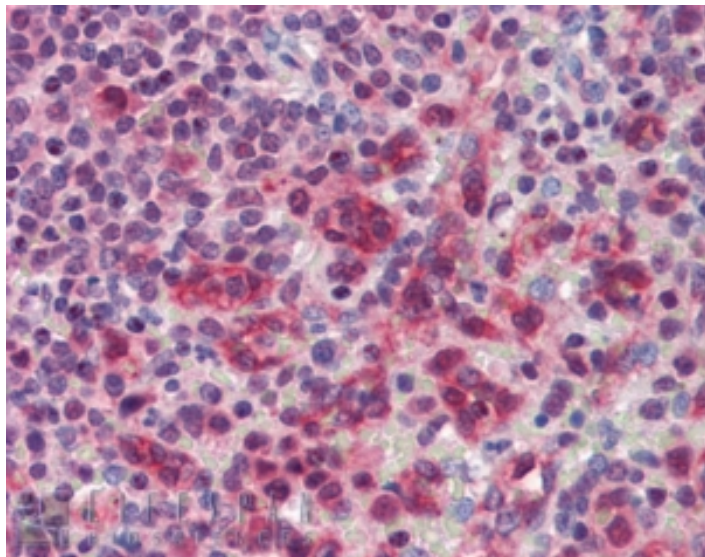


# GOAT ANTI-PILRB ANTIBODY

**SKU:** EB08239



## SPECIFICATIONS

<b>Formulation</b>	Supplied at 0.5 mg/ml in Tris saline, 0.02% sodium azide, pH7.3 with 0.5% bovine serum albumin.
<b>Unit Size</b>	100 µg
<b>Storage</b>	Aliquot and store at -20°C. Minimize freezing and thawing.
<b>Instructions</b>	
<b>Synonym / Alias</b>	paired immunoglobulin-like receptor beta paired immunoglobulin-like receptor beta cell surface receptor FDFACT2 cell surface receptor FDFACT1 activating receptor PILRbeta FDFACT2 FDFACT1 paired immunoglobulin-like type 2 receptor beta PILRB
<b>Names</b>	
<b>Accession ID</b>	NP_038468.3; NP_839956.1
<b>Blocking Peptide</b>	EBP08239
<b>Immunogen</b>	Peptide with sequence C-RVTESKGHSESWH, from the internal region of the protein sequence according to NP_038468.3; NP_839956.1.
<b>Product</b>	Both variants represent identical proteins (NP_038468.3; NP_839956.1). This antibody is expected to recognize isoform a only (NP_038468.3; NP_839956.1).
<b>Comments</b>	
<b>Peptide Sequence</b>	C-RVTESKGHSESWH
<b>Purification Method</b>	Purified from goat serum by ammonium sulphate precipitation followed by antigen affinity chromatography using the immunizing peptide.

<b>Shipping Instructions</b>	Refrigerated
<b>Predicted Species</b>	Human
<b>Reactive Species</b>	Human
<b>Human Gene ID</b>	29990
<b>Product Grade</b>	<a href="https://prod-vector-labs-pimcore-assets.s3.us-east-1.amazonaws.com/assets/products/image/elite_medium.png">https://prod-vector-labs-pimcore-assets.s3.us-east-1.amazonaws.com/assets/products/image/elite_medium.png</a>
<b>IHC Results</b>	In paraffin embedded Human Spleen shows membranous staining in some cells. Recommended concentration, 3-6µg/ml.
<b>ELISA</b>	
<b>Detection Limit</b>	Antibody detection limit dilution 1:16000.
<b>Application Type</b>	Pep-ELISA, IHC

## DOCUMENTS

- [Data Sheet](#)

## GALLERY IMAGES

