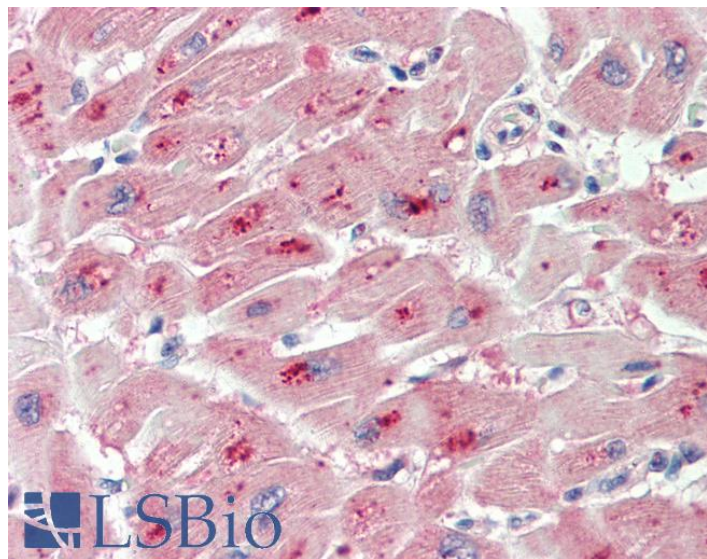


GOAT ANTI-PIM2 (AA23-36) ANTIBODY

SKU: EB10892



SPECIFICATIONS

Formulation Supplied at 0.5 mg/ml in Tris saline, 0.02% sodium azide, pH7.3 with 0.5% bovine serum albumin.

Unit Size 100 µg

Storage Instructions Aliquot and store at -20°C. Minimize freezing and thawing.

Synonym / Alias Names PIM2| pim-2 oncogene| pim-2h| proto-oncogene Pim-2 (serine threonine kinase)| serine/threonine protein kinase pim-2| serine/threonine-protein kinase pim-2

Accession ID NP_006866.2

Blocking Peptide EBP10892

Immunogen Peptide with sequence C-KDREAFAEYRLGP, from the internal region (near N Terminus) of the protein sequence according to NP_006866.2.

Peptide Sequence C-KDREAFAEYRLGP

Purification Method Purified from goat serum by ammonium sulphate precipitation followed by antigen affinity chromatography using the immunizing peptide.

Shipping Instructions Refrigerated

Predicted Species	Human, Mouse, Rat, Cow
Reactive Species	Human
Human Gene ID	11040
Mouse Gene ID	18715
Rat Gene ID	317366
Product Grade	https://prod-vector-labs-pimcore-assets.s3.us-east-1.amazonaws.com/assets/products/image/elite_medium.png
IHC Results	Paraffin embedded Human Heart. Recommended concentration: 5µg/ml.
ELISA	
Detection Limit	Antibody detection limit dilution 1:64000.
Western Blot	In transfected HEK293 transiently expressing Human PIM2 (myc and DYKDDDDK tagged), a band of approx. 38kDa is observed. No bands are observed in mock-transfected HEK293 and the same band is observed using anti-myc antibody. Recommended concentration: 0.5-1µg/ml.
Application Type	Pep-ELISA, WB-Trf, IHC

DOCUMENTS

- [Data Sheet](#)

GALLERY IMAGES

