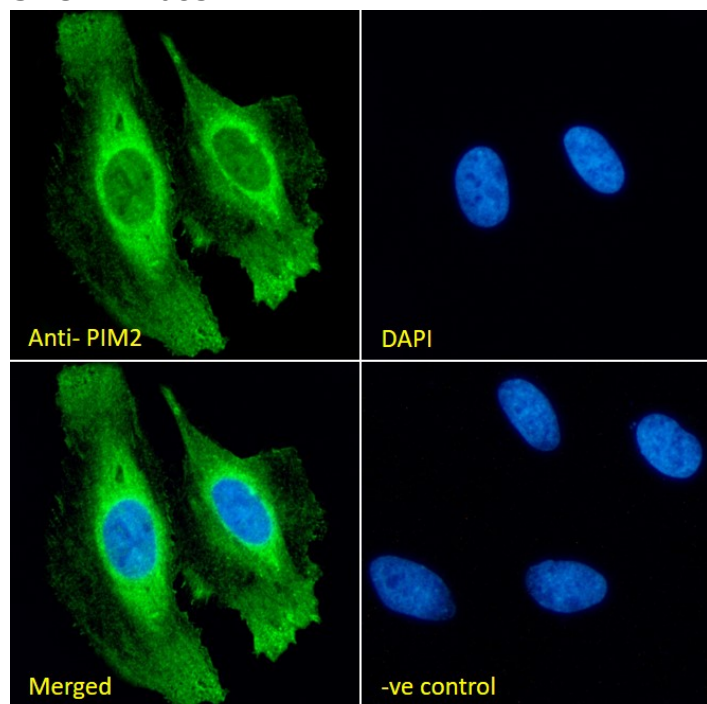


GOAT ANTI-PIM2 ANTIBODY

SKU: EB10834



SPECIFICATIONS

Formulation	Supplied at 0.5 mg/ml in Tris saline, 0.02% sodium azide, pH7.3 with 0.5% bovine serum albumin.
Unit Size	100 µg
Storage Instructions	Aliquot and store at -20°C. Minimize freezing and thawing.
Synonym / Alias Names	serine/threonine-protein kinase pim-2 serine/threonine protein kinase pim-2 proto-oncogene Pim-2 (serine threonine kinase) pim-2h pim-2 oncogene PIM2
Usage Summary	Immunofluorescence: Strong expression of the protein seen in the cytoplasm and membranes of HeLa cells. Recommended concentration: 10µg/ml. Flow Cytometry: Flow cytometric analysis of HeLa cells. Recommended concentration: 10ug/ml.
Accession ID	NP_006866.2
Blocking Peptide	EBP10834
Immunogen	Peptide with sequence C-QTPAEDVPLNPSK, from the C Terminus of the protein sequence according to NP_006866.2.

Peptide Sequence	C-QTPAEDVPLNPSK
Purification Method	Purified from goat serum by ammonium sulphate precipitation followed by antigen affinity chromatography using the immunizing peptide.
Shipping Instructions	Refrigerated
Predicted Species	Human
Reactive Species	Human
Human Gene ID	11040
Product Grade	https://prod-vector-labs-pimcore-assets.s3.us-east-1.amazonaws.com/assets/products/image/elite_plus_medium.png
IHC Results	Paraffin embedded Human Testis. Recommended concentration: 5µg/ml.
ELISA Detection Limit	Antibody detection limit dilution 1:16000.
Western Blot	Approx. 30kDa band observed in lysates of cell line K562 and in preliminary testing of cell lines HeLa and Caco-2 and approx. 30-35kDa observed in lysates of cell line HepG2 (calculated MW of 34.2kDa according to NP_006866.2). Recommended concentration: 0.3-1µg/ml. Primary incubation 1 hour at room temperature.
Application Type	Pep-ELISA, WB, IHC, IF, FC

DOCUMENTS

- [Data Sheet](#)

GALLERY IMAGES

