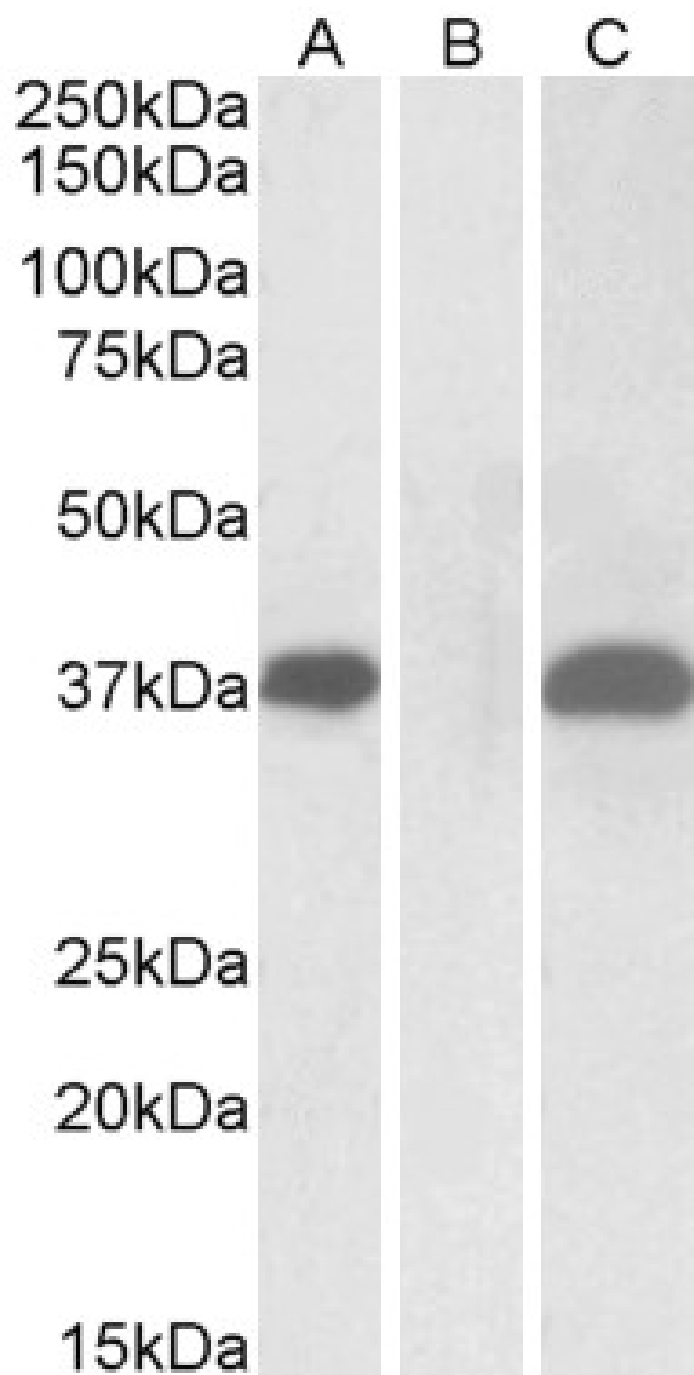


GOAT ANTI-PIM2 (INTERNAL) ANTIBODY

SKU: EB07041



SPECIFICATIONS

Formulation	Supplied at 0.5 mg/ml in Tris saline, 0.02% sodium azide, pH7.3 with 0.5% bovine serum albumin.
Unit Size	100 µg
Storage Instructions	Aliquot and store at -20°C. Minimize freezing and thawing.
Synonym / Alias Names	PIM2 pim-2 oncogene HGNC:8987 proto-oncogene Pim-2 (serine threonine kinase) serine/threonine protein kinase pim-2
Accession ID	NP_006866.2
Blocking Peptide	EBP07041
Immunogen	Peptide with sequence C-PPGGKDREAFAE, from the internal region of the protein sequence according to NP_006866.2.
Peptide Sequence	C-PPGGKDREAFAE
Purification Method	Purified from goat serum by ammonium sulphate precipitation followed by antigen affinity chromatography using the immunizing peptide.
Shipping Instructions	Refrigerated
Predicted Species	Human, Mouse, Dog, Cow
Reactive Species	Human
Human Gene ID	11040
Product Grade	https://prod-vector-labs-pimcore-assets.s3.us-east-1.amazonaws.com/assets/products/image/elite_medium.png
ELISA Detection Limit	Antibody detection limit dilution 1:16000.
Western Blot	In transfected HEK293 transiently expressing Human PIM2 (myc and DYKDDDDK tagged), a band of approx. 38kDa is observed. No bands are observed in mock-transfected HEK293 and the same band is observed using anti-myc antibody. Recommended concentration, 1-3µg/ml.
Application Type	Pep-ELISA, WB-Trf

DOCUMENTS

- [Data Sheet](#)

GALLERY IMAGES

