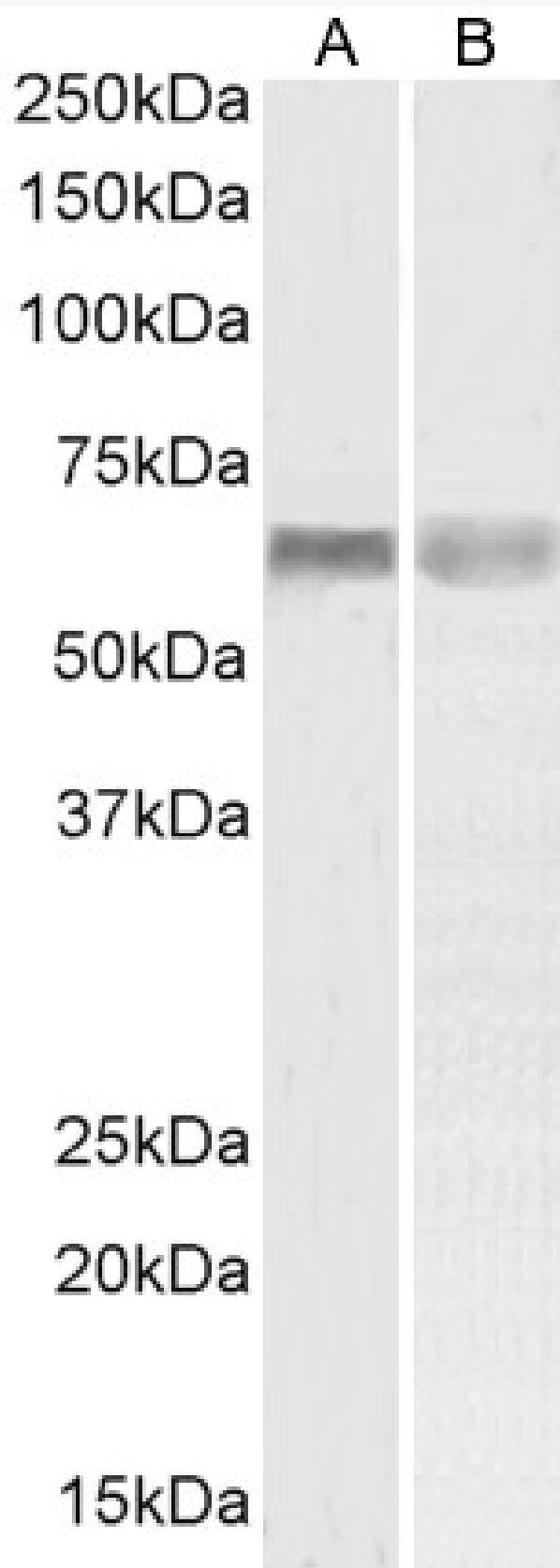


# GOAT ANTI-PINK1 ANTIBODY

**SKU:** EB07940



## SPECIFICATIONS

**Formulation** Supplied at 0.5 mg/ml in Tris saline, 0.02% sodium azide, pH7.3 with 0.5% bovine serum albumin.

**Unit Size** 100 µg

**Storage Instructions** Aliquot and store at -20°C. Minimize freezing and thawing.

**Synonym / Alias Names** serine/threonine-protein kinase PINK1|protein kinase BRPK|PARK6|FLJ27236|BRPK|PTEN induced putative kinase 1|PINK1

**Usage Summary**

<p><strong>Flow Cytometry:</strong> Flow cytometric analysis of Jurkat cells. Recommended concentration: 10ug/ml.</p>

**Accession ID** NP\_115785.1

**Blocking Peptide** EBP07940

**Immunogen** Peptide with sequence C-QGKAHLESRSYQEAQ, from the internal region of the protein sequence according to NP\_115785.1.

**Peptide Sequence** C-QGKAHLESRSYQEAQ

**Purification Method** Purified from goat serum by ammonium sulphate precipitation followed by antigen affinity chromatography using the immunizing peptide.

**Shipping Instructions** Refrigerated

**Predicted Species** Human

**Reactive Species** Human

**Human Gene ID** 65018

**Mouse Gene ID** 68943

**Rat Gene ID** 298575

**Product Grade** [https://prod-vector-labs-pimcore-assets.s3.us-east-1.amazonaws.com/assets/products/image/elite\\_medium.png](https://prod-vector-labs-pimcore-assets.s3.us-east-1.amazonaws.com/assets/products/image/elite_medium.png)

**ELISA Detection Limit** Antibody detection limit dilution 1:16000.

**Western Blot** Approx. 60-65kDa band observed in lysates of cell lines Jurkat and HeLa (calculated MW of 62.8kDa according to NP\_115785.1). Recommended concentration: 1-2µg/ml. Primary incubation 1 hour at room temperature.

**Application Type** Pep-ELISA, WB, FC

## DOCUMENTS

- [Data Sheet](#)

## GALLERY IMAGES

