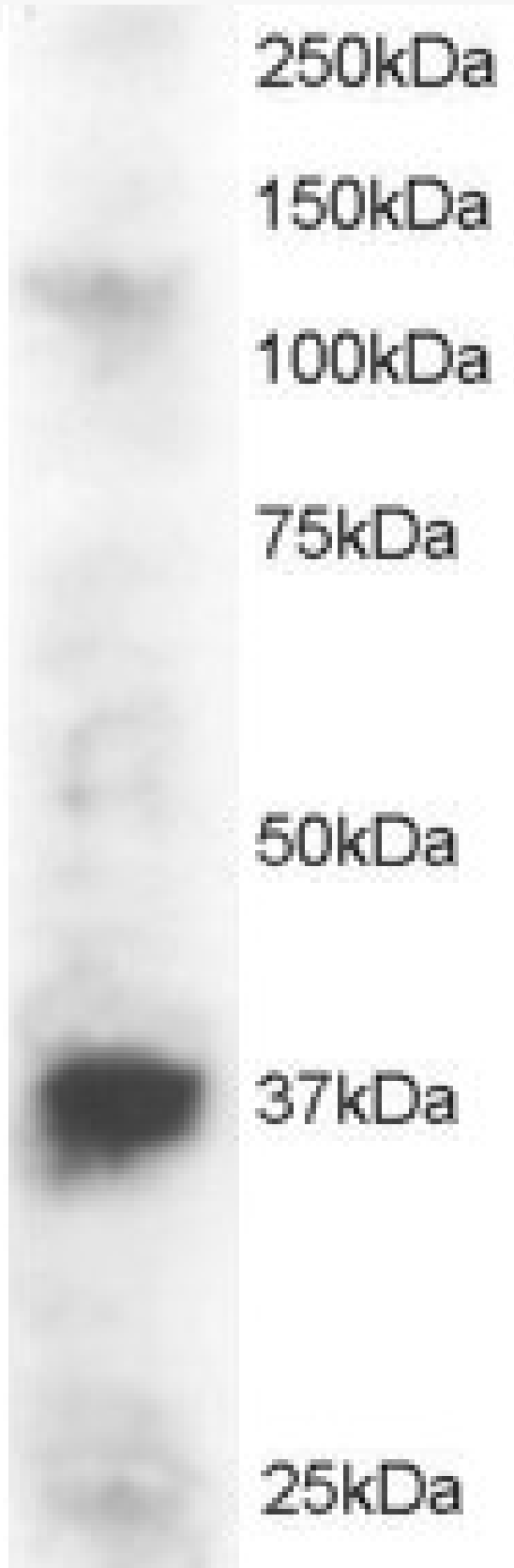


GOAT ANTI-PINX1 ANTIBODY

SKU: EB05324



SPECIFICATIONS

Formulation	Supplied at 0.5 mg/ml in Tris saline, 0.02% sodium azide, pH7.3 with 0.5% bovine serum albumin.
Unit Size	100 µg
Storage Instructions	Aliquot and store at -20°C. Minimize freezing and thawing.
Synonym / Alias Names	PINX1 PIN2-interacting protein 1 LPTS MGC8850 FLJ20565 LPTL 67-11-3 protein hepatocellular carcinoma-related putative tumor suppressor
Accession ID	NP_060354.4
Blocking Peptide	EBP05324
Immunogen	Peptide with sequence SMLAERRRKQKWAV-C, from the N Terminus of the protein sequence according to NP_060354.4.
Peptide Sequence	SMLAERRRKQKWAV-C
Purification Method	Purified from goat serum by ammonium sulphate precipitation followed by antigen affinity chromatography using the immunizing peptide.
Shipping Instructions	Refrigerated
Predicted Species	Human, Mouse, Rat, Pig, Dog, Cow
Reactive Species	Human
Human Gene ID	54984
Product Grade	https://prod-vector-labs-pimcore-assets.s3.us-east-1.amazonaws.com/assets/products/image/elite_medium.png
ELISA Detection Limit	Antibody detection limit dilution 1:4000.
Western Blot	Approx 35kDa band seen in Jurkat lysate. Recommended for use at 1-3µg/ml.
Application Type	Pep-ELISA, WB

DOCUMENTS

- [Data Sheet](#)

GALLERY IMAGES

