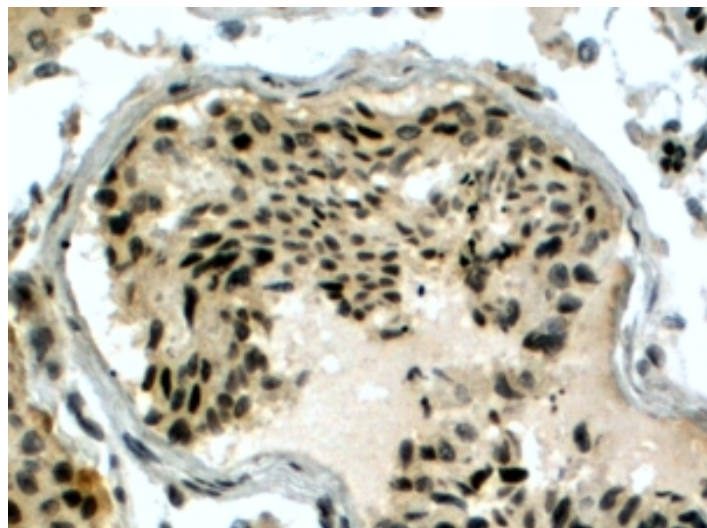


# GOAT ANTI-PIR51 / RAD51AP1 ANTIBODY

**SKU:** EB05691



## SPECIFICATIONS

<b>Formulation</b>	Supplied at 0.5 mg/ml in Tris saline, 0.02% sodium azide, pH7.3 with 0.5% bovine serum albumin.
<b>Unit Size</b>	100 µg
<b>Storage Instructions</b>	Aliquot and store at -20°C. Minimize freezing and thawing.
<b>Synonym / Alias Names</b>	RAD51 associated protein 1 RAD51-interacting protein PIR51 RAD51AP1
<b>Usage Summary</b>	<p><strong>Immunofluorescence:</strong> Strong expression of the protein seen in the nuclei of HeLa cells.</p> <p>Recommended concentration: 10µg/ml.</p> <p><strong>Flow Cytometry:</strong> Flow cytometric analysis of HeLa cells. Recommended concentration: 10ug/ml.</p>
<b>Accession ID</b>	NP_001124334.1; NP_006470
<b>Blocking Peptide</b>	EBP05691
<b>Immunogen</b>	Peptide with sequence C-ARVKPLHPNATST, from the C Terminus of the protein sequence according to NP_001124334.1; NP_006470.
<b>Product Comments</b>	This antibody is expected to recognise both reported isoforms.
<b>Peptide Sequence</b>	C-ARVKPLHPNATST

<b>Purification Method</b>	Purified from goat serum by ammonium sulphate precipitation followed by antigen affinity chromatography using the immunizing peptide.
<b>Shipping Instructions</b>	Refrigerated
<b>Predicted Species</b>	Human, Dog, Cow
<b>Reactive Species</b>	Human
<b>Human Gene ID</b>	10635
<b>Product Grade</b>	<a href="https://prod-vector-labs-pimcore-assets.s3.us-east-1.amazonaws.com/assets/products/image/elite_plus_medium.png">https://prod-vector-labs-pimcore-assets.s3.us-east-1.amazonaws.com/assets/products/image/elite_plus_medium.png</a>
<b>IHC Results</b>	In paraffin embedded Human Testis shows nuclear staining in spermatocytes and spermatids. Recommended concentration: 4-6µg/ml.
<b>ELISA</b>	
<b>Detection Limit</b>	Antibody detection limit dilution 1:32000.
<b>Application Type</b>	Pep-ELISA, IHC, IF, FC

## DOCUMENTS

- [Data Sheet](#)

## GALLERY IMAGES

