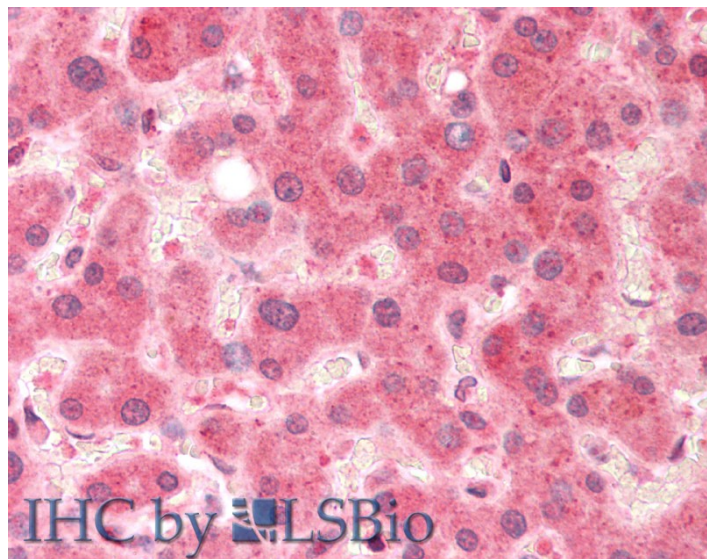


# GOAT ANTI-PIRIN ANTIBODY

**SKU:** EB06437



## SPECIFICATIONS

**Formulation** Supplied at 0.5 mg/ml in Tris saline, 0.02% sodium azide, pH7.3 with 0.5% bovine serum albumin.

**Unit Size** 100 µg

**Storage Instructions** Aliquot and store at -20°C. Minimize freezing and thawing.

**Synonym /**

**Alias** pirin (iron-binding nuclear protein)|PIR|pirin

**Names**

**Accession ID** NP\_003653.1

**Blocking Peptide** EBP06437

**Immunogen** Peptide with sequence GSSKKVTLVSLSREC, from the N Terminus of the protein sequence according to NP\_003653.1.

**Product Comments** Variants (NP\_003653.1; NP\_001018119.1) encode the same protein

**Peptide Sequence** GSSKKVTLVSLSREC

**Purification Method** Purified from goat serum by ammonium sulphate precipitation followed by antigen affinity chromatography using the immunizing peptide.

<b>Shipping Instructions</b>	Refrigerated
<b>Predicted Species</b>	Human, Mouse
<b>Reactive Species</b>	Human
<b>Human Gene ID</b>	8544
<b>Product Grade</b>	<a href="https://prod-vector-labs-pimcore-assets.s3.us-east-1.amazonaws.com/assets/products/image/elite_medium.png">https://prod-vector-labs-pimcore-assets.s3.us-east-1.amazonaws.com/assets/products/image/elite_medium.png</a>
<b>IHC Results</b>	Paraffin embedded Human Liver and Spleen. Recommended concentration: 5µg/ml.
<b>ELISA</b>	
<b>Detection Limit</b>	Antibody detection limit dilution 1:128000.
<b>Western Blot</b>	Approx 33kDa band observed in Human Heart lysate (calculated MW of 32.1kDa according to NP_003653.1). Recommended concentration: 0.3 - 1.0 µg/ml. Primary incubation was 1 hour.
<b>Application Type</b>	Pep-ELISA, WB, IHC

## DOCUMENTS

- [Data Sheet](#)

## GALLERY IMAGES

