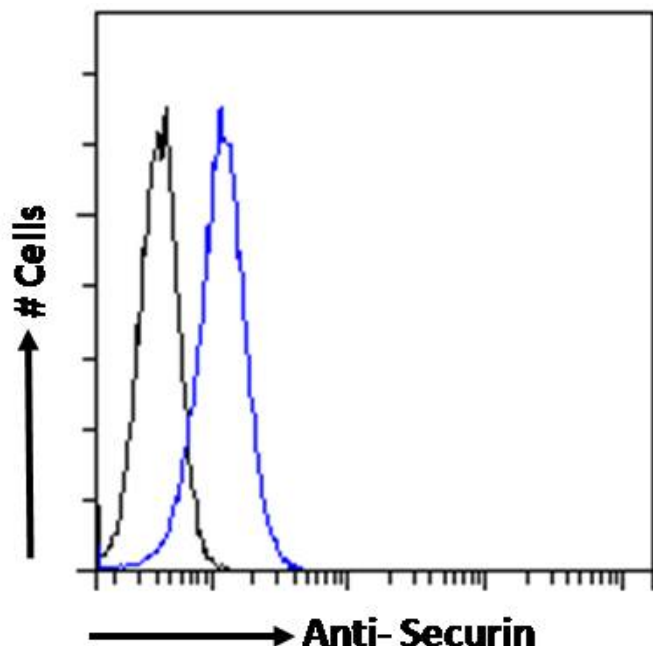


GOAT ANTI-PITUITARY TUMOR-TRANSFORMING 1 / SECURIN ANTIBODY

SKU: EB06811



SPECIFICATIONS

Formulation Supplied at 0.5 mg/ml in Tris saline, 0.02% sodium azide, pH7.3 with 0.5% bovine serum albumin.

Unit Size 100 µg

Storage Instructions Aliquot and store at -20°C. Minimize freezing and thawing.

Synonym / Alias Names tumor-transforming protein 1|pituitary tumor-transforming protein 1|ESP1-associated protein 1|TUTR1|SECURIN|PTTG|HPTTG|EAP1|HGNC:9690|pituitary tumor-transforming 1|PTTG1

Usage Summary **Immunofluorescence:** Strong expression of the protein seen in the cytoplasm of HeLa and U2OS cells. Recommended concentration: 10µg/ml. **Flow Cytometry:** Flow cytometric analysis of Jurkat cells. Recommended concentration: 10ug/ml.

Accession ID NP_004210.1

Blocking Peptide EBP06811

Immunogen	Peptide with sequence C-ILDEERELEKLFQ, from the internal region of the protein sequence according to NP_004210.1.
Product Comments	Likely to cross-react to PTTG2 and PTTG3
Peptide Sequence	C-ILDEERELEKLFQ
Purification Method	Purified from goat serum by ammonium sulphate precipitation followed by antigen affinity chromatography using the immunizing peptide.
Shipping Instructions	Refrigerated
Predicted Species	Human, Mouse, Dog
Reactive Species	Human
Human Gene ID	9232
Product Grade	https://prod-vector-labs-pimcore-assets.s3.us-east-1.amazonaws.com/assets/products/image/elite_plus_medium.png
IHC Results	Paraffin embedded Human Tonsil and Testis. Recommended concentration: 2.5µg/ml.
ELISA	
Detection Limit	Antibody detection limit dilution 1:16000.
Application Type	Pep-ELISA, IHC, IF, FC

DOCUMENTS

- [Data Sheet](#)

GALLERY IMAGES

